

Attachment 2:

LANDSCAPE FOR BREEDING AND TRAINING OF CEREMONIAL CARRIAGE HORSES AT KLADRUBY NAD LABEM

**ADDENDA AND CORRIGENDA TO THE
NOMINATION DOSSIER**

CZECH REPUBLIC

2018

LANDSCAPE FOR BREEDING AND TRAINING OF CEREMONIAL CARRIAGE HORSES AT KLADRUBY NAD LABEM

**ADDENDA AND CORRIGENDA TO THE
NOMINATION DOSSIER**

2018

Team of authors in alphabetical order:

Supervisor: Michal Beneš

Editor: Roman Zámečník

Michal Beneš
Pavel Douša
Věra Kučová
Jiří Machek
Milan Novák
Zdeněk Novák
Vlastimil Peřina
Jitka Raichová
Zuzana Šancová
Radek Václavík
Vlastimil Váňa
Roman Zámečník

Table of Contents:

Addendum to Chapter 2.a Property Description	4
New Chapter 2.a.1 Horses and the Landscape	4
Addendum to Chapter 2.a Property Description	14
New Sub-chapter 2.a.2 Safeguarding of the Kladruber Horse Breed	14
Addendum to Sub-chapter 3.1.a Brief Synthesis	17
Addendum to Item (i) Resume of Factual Information in Sub-chapter 3.1.a	17
Addendum to Item (ii) Resume of Qualities, Chapter 3.1.a	19
Addendum to Sub-chapter 3.1.c Statement of Integrity	20
Addendum to Sub-chapter 3.1.d Statement of Authenticity for nominations made under criteria (i) to (vi)	21
Addendum to Sub-chapter 4.a.5 Major Property Restoration Projects under Preparation	22
Addendum to Chapter 5.c Means of Implementing Protective Measures	38
New Sub-chapter 5.c.3 Nature conservation measures aimed at safeguarding of the Site of Community Importance	38
Addendum to Chapter 5.h Visitor facilities and infrastructure	40
Addendum to Chapter 5.i Policies and programmes relating to the presentation and promotion of the property	41
Addendum to Chapter 5.j Staffing levels and expertise (professional, technical, maintenance	44
Addendum to Chapter 6.a Key indicators for measuring state of property conservation	45
Addendum to Chapter 6.c: Outcomes of previous reports	46
Addendum to Annex 6 – Other Documents	47
New Annex f) Public Support	47
Addendum to Annex 6 Other Documents	80
New document: Memorandum on the Establishment of the Steering Group for the Landscape for Breeding and Training of Ceremonial Carriage Horses at Kladruby nad Labem	80

Addendum to Chapter 2.a Property Description

New Chapter 2.a.1 Horses and the Landscape

The Nominated Landscape was chosen by the Imperial Court as the most suitable one in the entire empire (before 1804 the total area of so called Habsburg Hereditary Lands was 698,700 km²¹) for breeding and training of gala carrossier horses and this activity has continued to date. The fertility of the Nominated Landscape and favourable climate conditions have always provided an abundance of high quality fodder which facilitated the purposely bred and cultivated breed of strong and heavily built (but still elegant) carriage horses used for pulling heavy coaches. It is worth mentioning that if riding horses from a less fertile regions were moved here and bred in this landscape it is most likely they would have suffered from overweight and, vice versa, if the local breed was moved to a less fertile landscape their built would have changed throughout several generations. Such horses would have been more subtle, shorter and lacked the necessary strength. Even the local terrain, mainly flat or gently undulating, is ideal for training the horses in hand, particularly in teams. On the other hand, it is evident that the layout as designed in the early 19th century as well as more recent periods, has always respected the needs of horse breeding and training both by the landscape composition and the arrangement of the communication axis and lines. In this respect the linear vegetation has not only performed the aesthetic and composition function, but it has always been indispensable for the breeding function as it shades the routes on which the horses move, acts as a windbreak and marks the borders of land plots as described in the Nomination Dossier (Chapter 2.a Property Description). In a similar way the groups (clumps) of trees on pastures have not only performed an aesthetic function, but they provide so much needed shade to the grazing herds of horses.

In the 16th and 17th century the horses were bred in a semi-wild manner in fenced horse parks. The same approach was also adopted in the Nominated Landscape where horses were kept in a fenced park (see the Nomination Dossier Chapter 2.b History and Development). There was a gradual change from free grazing in a fenced park to separately fenced grazing lots in an open landscape (see the Nomination Dossier, Annex 1: Maps, Plans and Schematic Drawings – Maps no. 001 and 004). After the Nominated Landscape was modified in the early 19th century, (for more details see the Nomination Dossier Chapter 2.b.2, Peak Period of the Stud Farm) the method of horse breeding changed and it has survived to date. It is based on three farmsteads with stables built in those times (the main one is at Kladruby nad Labem then at Františkov and Josefov) surrounded by pasture segments the geometry of which is defined by means of the landscape composition (see the relevant chapters) and interconnected with the main communication axis which in fact are the main composition axis as well as other roads necessary for horse training.

The pastures surrounding the three farmsteads are situated next to each other and together with their respective farmstead they represent an integrated functional unit: the main farmstead of Kladruby nad Labem serves for horse breeding as such and the studs and the herd of breeding mares, nursed foals up to six months of age (until weaned from dams) and horses in training (it starts at the age of three) are stabled there; at the Františkov farmstead there are colts and fillies from six months to three years of age. The Josefov farmstead is used according to the operational needs either for stabling a part of the breeding herd of mares or for the youngest weaned foals. The modus operandi of the stud farm, that is the specialisation of and co-operation between its parts, has not been changed since it was established in the early 19th century and has been preserved in its original form. The buildings housing the stables are still used for the same purpose for which they were originally built and the same applies to the landscape modified at that time.

¹The biggest state in Europe after Imperial Russia.

Every single part of the Landscape for Breeding and Training of Ceremonial Carriage Horses at Kladruby nad Labem serves a different purpose in horse breeding. The fenced pastures serve for grazing,² meadows (unfenced) are primarily used for hay production³ and sometimes, depending on the season of the year, horses are grazing on them (then a temporary fence is installed); the arable land serves for oat and barley production. The share of the total area of pastures and meadows has been constant over the years and corresponds to the relatively stable size of the herd bred in other words it fully satisfies the herd's needs for grazing and fodder (for more details see the Nomination Dossier, Chapter 2.a, Property Description). The area of arable land has also remained stable to cater for the herd of the given size.⁴

The use of meadows is defined by the needs of the herd – they are cut twice a year. The alleys of fruit trees not only perform their composition and aesthetic function, particularly in spring, but fruit is also used as a supplement to the fodder.

The functional allocation of land plots as meadows, pastures and fields has remained unchanged for years as documented in the Land Register where meadows and pastures are recorded as a different type of land than the arable land.

In addition to the pasture fencing there are also fenced winter paddocks. These are used in winter to keep the horses in good condition and maintain their muscle strength.

Separate paddocks for studs (each must have its own to prevent them from fighting with each other) are arranged as an integral part of the formal composition of the Nominated Landscape and they are located in the close vicinity of the Kladruby nad Labem farmstead (to the south and west of the stables). They are smaller than pastures and the fences are higher. Every farmstead has its own ring or course to be used by horses in winter where they can run and move faster; normally in winter they spend the daytime in the winter paddocks.

The forest is used not only for timber production which also serves in horse breeding e.g. for fencing of pastures and paddocks but it also serves as a training ground for teams of horses – the forest lanes are mainly straight with right angle geometry and they are sandy. The meadows in the Mošnice Country Park are used for hay production and they also underline the overall composition. The ways in the park have gentle bends with a big radius suitable for the training of teams of horses in hand.

The horse breeding method applied in the Nominated Landscape is based on keeping horses in herds on pastures. The grazing season starts as soon as possible in spring (usually in April) and ends in late autumn (mostly in November). Every morning all herds from the three farmsteads (mares, mares with foals, foals/young horses) are driven to the adjacent pastures and every evening there are driven back. This daily ritual, repeated every morning and evening is an authentic part of the landscape life underlining its everyday beat and rhythm.

²At Kladruby nad Labem there are 448 ha available for the horses only. The area of the grazing land is 225 ha. There are 250 horses on average that is each horse has 0.9 ha of grazing land; the average consumption is about 15 kg/day; the grazing period lasts seven months (213 days).

³ 223 ha of meadows provide hay for horses twice a year. The average yield is 40 metric cents from one hectare that is 8,920 metric cents per year. This annual hay production of 8,920 metric cents is used in the following way: 250 horses (average number) in total; each horse gets 35 metric cents of hay per year; it equals to 9.5 kg of hay per horse per day (35 q = 3 500 kg; 3 500 kg : 365 = 9.5 kg). Hay is stored in pile barns. The average day feed per horse includes 8 kilos of hay, 1 kilo of oat or barley, 10 kilos of straw.

⁴In 2016–2017 the area of arable land was reduced because the arable land lease contracts with small holders expired and the Kladruby nad Labem National Stud Farm took back the full control over the arable land. The National Stud Farm solely decides about the use of land based on the herd alimentary needs which is the same approach as in the Imperial era and therefore the total area of arable land was reduced. In line with the Management Plan the Kladruby nad Labem National Stud Farm is returning to the original structure and area of land plots.

The herds are driven by herders using special long whips the cracking sound of which is typical in the landscape and works as an acoustic signal for the herd.⁵ The herd follows the cracking sound of a whip when driven to the pasture. This sound also rounds up the herd when driven back to the stable. The size of pastures is proportionate to the size of a herd. The average area of a pasture is 5 ha. It can provide feed for a herd of 20 to 40 horses for about 2–3 weeks depending on the quality of vegetation. Then the herd is moved to another pasture. The fence is not too high as horses have no need to leave the pasture as there is always enough grass and other vegetation for all of them. As mentioned earlier, every stud has its own paddock to avoid their fighting and therefore these paddocks are smaller (approximately 20x40 meters) with a higher fence (1.8m) to prevent studs from jumping over it. The fence around the pastures used by mares and foals is lower (approximately 1 meter).

The breeding mares are covered for the first time when they are five years old and the same applies to stallions.⁶ The gestation period takes on average 335 days.

Foals are born in the main farmstead at Kladruby nad Labem. The traditional training method of Kladruher horses has been preserved. The imprinting approach is used since the birth that is let horses get used to people, wearing the headgear, being tethered, being led by bridle, grooming, cleaning, lifting legs, sustaining basic veterinary checks etc. Mares with foals are driven to the pasture daily.

After weaning from dams, the six months old foals are transferred from the Kladruby nad Labem farmstead via Selmická Alley to Františkov farmstead where there two herds are kept, one of colts and one of fillies. During the daylight the herds are grazing on the pastures and in the evening they return back to their stables where they can move freely.

When foals are about 3 years old they are walked back from the Františkov farmstead to the Kladruby nad Labem where they are based in the training stables (a group of stallions and a group of mares separately). In the training stables every horse has its own box. During the training the mares are driven to the pastures and stallions stay in their respective paddocks (as mentioned above).

In the first year a three year old horse undergoes the basic training. First horses are trained to get used to the bridle, followed by lunging, getting used to a saddle and later to the weight of a rider. A driving horse is first trained on a lunge. Then he gets used to the harness; first the harness ropes are held by handlers then a log is used to be pulled by a horse. If the horse can manage pulling the log then it can be hitched to a coach. Usually a younger horse is teamed with an older one, so called teacher. When young horses (so called “remounts”) can walk reliably they are put in teams of two. In the team they are usually horses of the same sex or geldings with mares, only exceptionally can a mare and a stallion be teamed together.

After a year of training the horses must pass the performance test. After they pass the performance test mares and stallions either join the breeding herd or they are offered for sale. The type and look of a horse is assessed in a traditional way on a demonstration pedestal located at the edge of the central courtyard. When demonstrating a horse in trot the handler walks in the same gait as the horse which is a tradition dating back to the imperial era.

The main communication and composition axis (Selmická Alley) is the most important one in terms of horse breeding. It is surrounded by the majority of pasture segments. Therefore this avenue serves as the main route for driving the herds from the farmsteads at Kladruby nad Labem and Františkov to the nearby pastures and several times a year a group of horses walks via the avenue when transferred from one age group to another. These transfers are traditionally made “on the hoof”. It is one of the rituals happening in the Nominated Landscape. This axis is not only important for the

⁵The stud farm’s ethical conduct, even though not formally encoded, does not allow the use of these signalling whips for beating horses.

⁶The colour of horses turns white until they are about seven years old.

overall landscape composition but it is also important for the key moments of the daily and annual routines in the stud farm operations.

The roads and bridle ways in the Nominated Landscape are used for horse training (both in hand and under saddle), for daily exercising (e.g. studs in teams, under saddle), for presenting the landscape to visitors (from a coach or a horseback). The sandy surface of the forest lanes and the sandy loam soil in the meadows and pastures are ideal for horse training – such surfaces are flexible enough for horses and at the same time strong enough to sustain the weight of a pulled load.

The network of watercourses has gradually developed. It irrigates meadows and pastures during dry seasons and drains the landscape in case of extreme rainfall. It also serves for horse training either as a ford (for a coach or horse wading if under saddle) or a natural obstacle (horse jumping under saddle). Therefore the horses which were trained in the Landscape for Breeding and Training of Ceremonial Carriage Horses at Kladruby nad Labem are used to watercourses and they are not scared of water. Water in any form has never been an issue for them. This was particularly important when they served as draft horses and had to overcome obstacles such as ford crossings.⁷

Kladruber horses are still used for work in the landscape (this is a part of their training to get used to towing a load – a carriage) e.g. transporting manure, harrowing of the main court, sometimes for transporting hay, straw, oats, timber and other materials. They are also used for logging in the forest where they tow logs from felled areas closer to the roads.

The National Stud Farm at Kladruby nad Labem also provides job opportunities to traditional craftsman such as ferriers who as sole traders treat hoofs and shoe horses in the workshop owned by and located at the National Stud Farm at Kladruby nad Labem. The stud farm also employs two saddle makers who make and repair all horse tack – harnesses, saddles, bridles, whips etc. and their workshop is located in the former Forester's House at Kladruby nad Labem.

The stud farm operates its own timber mill to process the timber from its forests. Timber is used for traditional fencing of pastures. It is also used for making traditional ID labels for each horse. The key data is hand written on them, which is an old imperial tradition, and these include the horse name, lineage, date of birth and in case of studs their height and weight.

To keep the stables clean and tidy traditional handmade birch brooms are used for housekeeping. These brooms are made by the stud farm employees and they are preferred because their bristles are sharp enough and adequately flexible at the same time. Before sweeping the floors, made of oak cobbles, are sprayed with water to reduce the amount of dust⁸. A special vessel with a hole at the bottom is used for floor spraying to create a typical pattern on the floor. In every stable the pattern is different depending on the skills and creativity of the grooms.

⁷The training of horses in hand in the open countryside is extremely important for their future service as carriage horses or for mount service. During the training they not only meet other horses but also unfamiliar pedestrians, walking either alone or in groups; they are exposed to unfamiliar noises, animals, bicycles, motor vehicles etc. which they would probably never come across should they be trained only in an exercise ring. In this way they get used to such things and they are not surprised or scared by them. Horses then remain calm even when they serve in an urban environment.

⁸Floors made of oak cobble were very common in Czech lands but they have survived only rarely. Their use in stables was dictated not only by the availability of the material and its water resistance but because they are softer for horses to step on than a floor made of stone cobbles or bricks.

Other traditional arrangements in stables are wooden rolls at the corners of stable doors in order that the horses leaving or entering the stable were not injured by a sharp edge of the wall (see photo 10).



Fig. 01: Horse logging; logs are pulled from the felling area closer to the road.



Fig. 02: The former Forester's House where the saddlery is now located.



Fig. 03: Saddlery at the former Forester's House at Kladruby nad Labem.



Fig. 04: Saddlery at the former Forester's House at Kladruby nad Labem.



Fig. 05: Farrier's workshop situated in one of the farm buildings at Kladruby nad Labem



Fig. 06: Farrier's workshop situated in one of the farm buildings at Kladruby nad Labem.



Fig. 07: Joinery processing timber.



Fig. 08: Timber mill for processing timber from the local forests.



Fig. 09: Water-spray ornaments on the oak cobbled floor to reduce the amount of dust in the stables.



Fig. 10: Turning wooden rolls located at the edges of gates to the stables.

The location of the stud farm in the fertile Polabí area and the nature of the landscape had an influence on the physical characteristics of horses bred there. The flat land with pastures rich in nutrients has significantly contributed to the breeding of a mighty Kladruber horse which was predestined for towing big majestic coaches (carrossiers). For this reason the landscape composition pursued the aim to provide sufficient training opportunities for these horses. Keeping horses in herds of the same age cohorts has a positive impact on their mental development resulting in a calm and composed character which is an essential quality if they serve in official ceremonies or in the police force in the contemporary urban traffic. Their composed character is also crucial when they are used for therapeutic purposes.



Fig. 11: Boxes at the Kladruby nad Labem main stable for separate stabling of studs with the ID plate made of local wood

Addendum to Chapter 2.a Property Description

New Sub-chapter 2.a.2 Safeguarding of the Kladruher Horse Breed

The Kladruher horse is an original Czech breed whose significance from the equine point of view stretches well beyond the borders of the Czech Republic. The breed is well adjusted to the type of service it is meant to serve. The breeding goal was a gala carrossier – a strong carriage horse designed for ceremonies and representation. The original type of horse has been preserved thanks to continuous thoroughbred breeding in the unique environment of the Nominated Landscape. This warmblood breed came into existence in the Nominated Landscape (see Sub-chapter 2.a.1 Horses and the Landscape). When the stud farm was founded (late 16th century) the stallions were imported from Spain. Later, in the second half of the 17th century, Neapolitan stallions were imported from Italy which included the ancestors of the current Kladruher horses.⁹

In the past, Kladruher horses were bred in many colour variants; since late 18th century only in the white and black variant. White horses were used for ceremonial functions at the court and black horses were used by church dignitaries.

The oldest recorded stud from which the Kladruher breed started was the Italian black horse Peppoli from Ferrara (born 1764) which fathered Imperatore, a white horse (born 1775) which was the father of white Generale (born 1787). Its son Generalissimus (born 1797) was the founding father of another family. The founding father of black horses was stallion Sacramoso (born 1800) and black horse Napoleone (born 1845) imported from Rome.

Important genetic reserves which have developed during a long of adaptation to the local conditions in the country now called the Czech Republic are protected under the National Preservation and Utilisation of Plant, Animal and Microorganism Genetic Reserves for Alimentation and Agriculture (hereinafter as the National Programme).¹⁰The Kladruher breed is included in this National Programme.

The long-term goals of the National Programme – while all legal requirements, international commitments, codes and standards are adhered to and pursuant to the needs of its target users - are the following:

- Preserve the existing diversity of animal genetic reserves for the present needs and future applications of research and development and economically viable programmes focused on their protection; and
- Use endangered and small-number populations of indigenous animals and breeds which are historically and culturally associated with the Czech Republic for alternative and non-productive functions, in landscaping and nature conservation.

⁹Overview of founders of Kladruher horse tribes:

Name	Colour	Year of Birth	Breed	Origin
Generale	white	1787	Kladruher	Slovakia (Kopčany)
Generalissimus	white	1797	Kladruher	Slovakia (Kopčany)
Sacramoso	black	1800	Kladruher	Moravia (Kroměříž)
Napoleone	black	1845	Italian-Spanish	Italy (Rome)
Solo	black	1927	Kladruher	Kladruhy n. L. stud farm
Favory	buckskin	1779	Kladruher	Kladruhy n. L. stud farm
SiglaviPakra	black	1946	Lippizan	Chroatia (Dakovo)
Romke	black	1966	Friesian	Netheralnds
Rudolfo	white	1968	Lusitano	Portugal

¹⁰The National Programme was launched by the Institute of Animal Science in 1995–1998; The Czech Republic is a signatory of the Convention on Biological Diversity and the FAO Global Programme for Management of Genetic Resources.

The value of animal genetic reserves is not determined only by their “productive functions” but by preserving them so that there are more options available for responding to unpredictable future events and challenges such as new extinctions and climate changes.

Working with genetic reserves is a long-term effort based on the preservation of original genes in the course of animal breeding. To make the genetic reserve protective measures efficient it is necessary to identify the trends and changes in the population by regular monitoring.¹¹ The protective measures depend on the population size and development trends and they range from monitoring of the supported population in situ (mating plan) to regeneration (individual mating plans, use of cryopreserved material and embryo transfer).¹²

The population in situ is regularly supplemented by keeping cryopreserved material and genome collections (DNA). This is the case of Kladruber breed for which 2,238 frozen sperm doses are kept. In the Kladruber breed genome collection there are 732 specimens.¹³

Pursuant to Act 154/2000 Coll. on breeding and registration of livestock (the Breeding Act) as amended the Kladruby nad Labem National Stud Farm is recognised as the breeding establishment for Kladruber horses. As a result of it, the stud farm is responsible for keeping the Stud Books of Kladruber horses (hereinafter as the Stud Book) and breeding the Kladruber horse breed.

In this respect the key documents are the Breeding Goal, Breeding Programme and Stud Book Rules – all these documents must be approved by the Czech Ministry of Agriculture.

Pursuant to these documents the Kladruby nad Labem National Stud Farm has a Stud Book Committee in place which has nine members. (These include representatives of the National Stud Farm, private keepers of Kladruber horses, independent experts and a representative of the Czech Ministry of Agriculture.) The committee sets out the key rules for breeding, provides guidelines for breeding the population and its organisation and sets the principles for the Stud Book management and monitors whether they are met; it has the power to grant exceptions within the scope set by the Stud Book Rules, sets up the horse performance assessment committee and monitors the performance of the Breeding Programme. As part of the Stud Book management the Kladruby nad Labem National Stud Farm is involved in the following activities that have a significant impact on the entire population of Kladruber horses:

- Registration of foals
- Linear description of four year old horses (body build using a range of exterior features)
- Registration of mares into the breeding herd, selection of stallions for breeding
- Organisation of performance tests
- Consultations for development of the Mating Plan to avoid inbreeding
- Availability of studs for insemination with fresh sperm
- Registration of horses in the National Programme for the Preservation of Genetic Resources
- Promotion of the breed.

Once a year the Breeding Programme Evaluation is published which is approved by the Stud Book Committee and the Supervisory Board of the Kladruby nad Labem National stud Farm

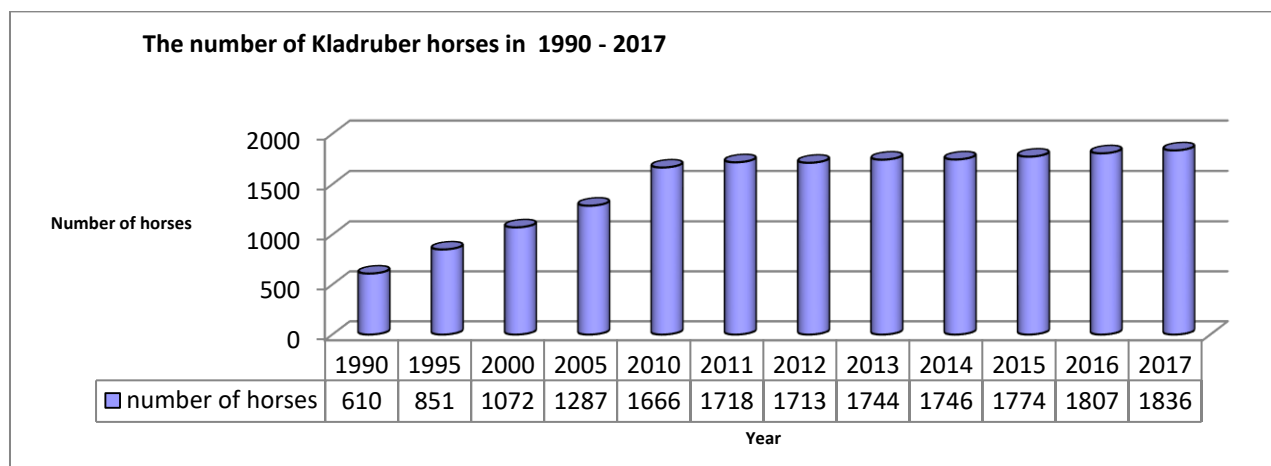
Twice a year (in spring and autumn) the horse selection is organised by the stud farm (see Schater 2.a.1 Horses and Landscape). There is a demonstration of horses in front of a committee the

¹¹The outcome of this Kladruber breed monitoring is the Annual Report on the implementation of the Breeding Programme which is approved by the Stud Book Committee and the Supervisory Board of the Kladruby nad Labem National Stud Farm (See also the text below.)

¹²The priorities for inclusion of a population in a specific regime are based on the Annual Reports for each breed and they are taken into account when funds for the following year are allocated from the national grant schemes launched for this particular purpose by the Czech Ministry of Agriculture.

¹³Only the horses entered in the Stud Book can be recognised at the Kladruber breed genetic reserve as they are directly linked to the original founders of tribes and families of this breed. Such horse must meet the required criteria and successfully pass the performance tests designed for the Kladruber breed. The decisive factors for including a horse in the genetic reserve are the lineage, type, exterior appearance, performance and leg movement.

members of which are a representative of private keepers and an external expert. This committee is focused on the assessment of the offspring, proposes particular horses to participate in the performance tests and suggests which mares and stallions should be discarded from the breeding herd. The size of the Kladruber horse population has not changed much in recent years. To 31st December 2017 there were 48 studs of which 46 are registered genetic reserve and out of the total number of 535 breeding mares 350 were a registered genetic reserve (for more details see the table in the footnote).¹⁴The breeding of Kladruber horses is stable; there is no immediate risk to the population and they have not been any adverse changes in the long term trends.



¹⁴Number of horses as of 31st December 2017:

Category	Kladrubynad Labem National Stud Farms			Private keepers			Total		
	White	Black	Total	White	Black	Total	White	Black	Total
Studs	13	15	28	7	13	20	20	28	48
Of which included in the genetic reserve	12	15	27	6	13	19	18	28	46
Breeding mares									
	70	78	148	193	207	400	263	285	548
Of which included in the genetic reserve	61	76	137	99	117	216	160	193	353
2017 cohort	41	32	73	14	12	26	55	44	99
2016 cohort	35	31	66	13	16	29	48	47	95
2015 cohort	27	41	68	13	23	36	40	64	104
2014 cohort	27	22	49	16	32	48	43	54	97
2013 cohort	7	5	12	31	24	55	38	29	67
2012 cohort	8	8	16	28	31	59	36	39	75
2011 cohort	5	6	11	31	24	55	36	30	66
2010 cohort	5	5	10	37	34	71	42	39	81
2009 cohort	3	4	7	39	28	67	42	32	74
2008 cohort	-	3	3	27	34	61	27	37	64
Older horses	5	7	12	200	206	406*	205	213	418*
Total	246	257	503	649	684	1333	895	941	1836

Addendum to Sub-chapter 3.1.a Brief Synthesis

Addendum to Item (i) Resume of Factual Information in Sub-chapter 3.1.a

Note: the text in the Nomination Dossier under Item (i) Section 3.1.a Brief Synthesis does not change, only the following is added:

The natural environment of the Nominated Landscape (see also above) enabled the planned and systematic breeding of a new breed of strong and powerful draft horses. For centuries the breeding goal was and it still is a Kladruher horse, a gala carrossier – a strong carriage horse to be used in ceremonies and for representation. This baroque breed was planned, monitored and recorded in the Stud Books by the Nominated Landscape managers (see Chapter 2.a.1 Horses and Landscape). The breeding stock of Kladruher horses is stable, there is no risk to the Kladruher horse population of extinction or degenerative changes. Sufficient genetic reserves are guaranteed primarily by breeding in situ as well as by regular depositing of cryopreserved material and by the existence of genome collection (DNA).

Without the geomorphological, pedological and climate properties of the Nominated Landscape the shaping of this special horse breed into the form required for its function would have been difficult, perhaps even impossible. If we are to extend the summary of the Nominated Landscape characteristics stated under Item (i) then it is the local fertile soil which enabled and has helped to preserve grassland and herbaceous communities regenerated by self-seeding on the local pastures and meadows which have always provided sufficient nutrients for the breed of strong horses. However, the quality of soil would not have been enough without an adequate water supply during droughts or water drainage to prevent waterlogging. Both the irrigation and drainage was provided by natural watercourses and a moderate terrain gradient supplemented by a well designed network of canals added as a part of the landscaping project and connected with the Elbe (Labe) River, where there is enough water throughout the year.

Sandy loam and sandy soils represent an ideal road stepping surface for horses as they are flexible enough and at the same time provide sufficient support for loads towed by horses. The road surface is both naturally compacted and loosened by horse hoofs. These types of soils together with the gently undulating and nearly flat terrain have provided supreme conditions for training horses in harness and this feature was fully deployed in routing the bridlevays for horse training and exercising. Another natural feature of the Nominated Landscape which had an impact on the local horse breed is its moderate climate. Therefore it has always been possible to raise horses in herds on pastures. The grazing season lasts seven months and this fact plays an important role in horse nourishment and fitness. The combination of soil quality and climate conditions is suitable for growing oats and barley and for planting fruit alleys to produce fruit which is an excellent supplement to hay and grain fodder fed to the horses because their strong build requires a rich and diverse fodder.

The soil and climate conditions are also favourable for large areas of forest. Forests have always provided enough timber for pasture fencing and stable furnishing as well as for protection of linear and solitary tree plantings. These trees divide the landscape into functional segments of pastures and meadows as stated elsewhere in the Nomination Dossier and they also provide shade to the horses grazing on pastures or being exercised in hand in the avenues. Trees also serve as windbreaks protecting horses in the open countryside.

The landscape terrain enabled a generous modification of the landscape including a network of communication axis and roads necessary for training horses in hand, accompanied by a geometric pattern of meadows and pastures lined by vegetation and watercourses as explained in more detail in the Nomination Dossier.

The applied method of horse breeding is based on grazing herds which was adopted after the major landscape modification in the first half of the 19th century when three main farmsteads with stables and their own pastures were established. At each farmstead a herd of horses of the same sex, age group and in the same stage of training is kept and the farmsteads co-operate with each other. In each phase of their lives horses are moved from one farmstead to another (as explained in Chapter 2.a.1 Landscape and Horses). The transfer of horses “on the hoof” in a certain period of their life (see 2.a.2 Preservation of the Kladruber Horse Breed) brings a regular rhythm in the Nominated Landscape dictated by the age of horses and their training. Life in the landscape has its daily routine too, which is defined by driving horses from stables to the pastures and paddocks and bringing them back to stables in the evening.

Horses are also trained for their future service in a traditional way which has developed for centuries and is the result of long-term practical experience passed from one generation of trainers to another. The imprinting approach is used from birth that is let horses get used to people, wearing the headgear, being tethered, being led by bridle, grooming, cleaning, lifting legs, sustaining basic veterinary checks etc. When horses are about three years old the training for their services starts – young horses are transferred to the training stable at Kladruby nad Labem. First they are trained to get used to the bridle, followed by lunging, getting used to a saddle and later to the weight of a rider. A draft horse is first trained on a lunge and then he gets used to the harness; first the harness ropes are held by handlers then a log is used to be pulled by a horse. If the horse can manage pulling the log then it is hitched to a coach. Usually a younger horse is teamed with an older one, so called teacher. After young horses can walk reliably in this “learning” team they are put in teams of two horses of the same sex or geldings with mares, only exceptionally can a stallion be teamed with a mare.

Many crafts are also associated with horse training in the open countryside – these include farriers, saddle makers (manufacture and repair of horse tack). The Stud Farm operates its own timber mill and joinery to process timber from its own forests.

Addendum to Item (ii) Resume of Qualities, Chapter 3.1.a

Note: The text in the Nomination Dossier under Item (ii) in Sub-chapter 3.1.a Brief Synthesis does not change only the following is added:

As stated in the previous addendum to Item (i) the characteristic features of the Nominated Landscape enabled the creation and preservation of the breed of Baroque Kladruher horses the breeding herd of which is an integral part of this landscape as it has evolved and lived there for centuries and contributes to the overall visual impact of the Nominated Landscape as well as its economic use.

On the other hand breeding and training of these horses has irreversibly shaped the landscape during its evolution to the present form.

The planned cultivation of the present Nominated Landscape has been the response to the needs of Kladruher horse breeding and training and this was in particular the systematic landscaping in the spirit of Classicist principles of composition in the first decades of the 19th century as explained in more detail in the Nomination Dossier (Chapter 2.a Property Description and their resumes in Chapter 3.1.a Brief Synthesis).

This resulted in a landscape the attributes of which include a visible pattern of fenced pastures and paddocks and unfenced meadows (primarily used for hay production), plots of arable land for growing oats and barley for grain fodder and production forests (providing timber for the stud farm needs) cut into rectangular segments by a network of right angle lanes. The key functional centres are the three farmsteads surrounded by pastures which have been in operation since their beginning and have preserved their specialised functions in horse breeding and training allocated to them in the first half of the 19th century (Kladruhy nad Labem farmstead – stallions, mares with foals up to six month of their age and horses in training; Františkov farmstead – six month old foals until they are three years old; Josefov farmstead – the herd of breeding mares, sometimes the youngest weanlings). As stated elsewhere the landscape is cut into segments by a network of roads and paths lined with trees. Their routing was not only important for the overall composition, but also for the operations related to horse breeding and training. These are not only communications for walking horses from one farmstead to another but they are particularly used for training horses in hand and they are indispensable in their preparation for future service.

If we summarise the preserved **attributes** (components) of the Nominated Landscape which are fully functional with respect to the horse breeding and training (see the Nomination Dossier, Chapter 2.a Property Description including its Addendum 2.a. 1 and Sub-chapter 3.1.a Brief Synthesis including the Addendum to Item (i)) and which contribute to its Outstanding Universal Value then these include not only the preserved historical arrangement and use of land plots, Classicist network of roads, system of avenues, lines and arranged groups of trees, solitary trees, variety of species, functional links and formal composition, water bodies and both natural and man-made watercourses, farmsteads with stables and other historical farm buildings and infrastructure but also the cultural breed of Baroque gala carrossier – Kladruher horse.

Addendum to Sub-chapter 3.1.c Statement of Integrity

The following wording is added to the text of Sub-chapter 3.1.c Statement of Integrity on page 54 and following of the Czech version and page 58 and following of the English version of the Nomination Dossier:

As stated in Sub-chapter 3.1.c of the Nomination Dossier, all the components essential for the Outstanding Universal Value are present within the border of the Nominated Landscape including their composition and functional links as well as operational and economic relationship. These components are also crucial for its sustainable traditional use which is breeding and training of carriage horses of Kladruber breed. In other words the landscape still exhibits all the attributes associated with its four centuries long economic function.

In this respect the determining landscape attributes are the following: pastures and the way they are structured into paddocks for studs and stallions and pastures for mares and dams with foals; meadows for hay production; arable land for production of grain fodder; production forests for timber used e.g. for pasture fencing; water system – irrigation and drainage canals having impact on the quality of grass on meadows and pastures and it also provides ample opportunities for training horses in wading; network of roads and lanes lined with trees and used for training of carriage horses in hand (avenues, alleys); solitary trees and groups of trees on pastures providing shade to grazing horses; farmsteads dedicated to a particular herd of horses depending on their sex, age and phase of training. All these attributes, closely linked to the four centuries long use of the landscape for breeding and training of carriage horses, are represented in the Nominated Landscape in proportion to the size of the herd, which is also one of its attributes. This in fact provides the functional integrity of the Nominated Landscape the main mission of which is breeding and training of carriage horses. The safeguarding measures are implemented in the Nominated Landscape on an ongoing basis with the aim of preserving all its constituent components. Meadows are regularly mowed, pastures reasonably grazed, forests responsibly managed by felling old and planting new native species. All three building complexes (the farmsteads at Kladruby nad Labem, Františkov and Josefov) have been professionally restored and the oxbow lakes, branches of the Elbe River and other elements of the Nominated Landscape have been revitalised (see the Nomination Dossier, Sub-chapter 4.a.4 Major Property Restoration Projects Completed). In addition to this there are other important restoration projects ready for implementation or being implemented right now which are aimed at some components of the Nominated Property (see the Nomination Dossier Sub-chapter 4.a.5 Major Property Restoration Projects under Preparation and the addendum to this chapter below).

The Site Manager's economy depends on breeding and training of carriage horses in the Nominated Landscape and therefore its existence depends on the preservation of those components which are associated with this function. This is a strong prerequisite for the preservation of the landscape's integrity, including the breed of gala carrossiers.

Addendum to Sub-chapter 3.1.d Statement of Authenticity for nominations made under criteria (i) to (vi)

The following is added to the text of Sub-chapter 3.1.d Statement of Authenticity for nominations made under criteria (i) to (vi) on page 56 and the following of the Czech version and on page 60 and the following of the English version:

As stated above in Sub-chapter 3.1.d the Nominated Landscape has fully preserved its functional authenticity. In other words the landscape was designed and has been used for four centuries for breeding and training of strong draft horses of the Kladruher breed created to serve at ceremonies and for towing heavy coaches. Thanks to the preservation of the original genes by systematic breeding of this horse breed, as documented in the historic and present Stud Books administered by the Site Manager. The Stud Book documents the breed authenticity and its stability. There have not been any major changes in the long term breeding trends. The breed is not exposed to any immediate risk of extinction. The herd of Kladruher horses bred in situ is regularly supplemented by depositing cryopreserved material and genome collection (DNA) (for more detail see also 2.a.2 Safeguarding of Kladruher Horse Breed).¹⁵

The original functional design of the landscape has been preserved to date and it co-determined the structure of the segments and the landscape's overall visual impact, as stated above. On the other hand the natural properties of the landscape have been preserved, in particular its fertility which enabled creation of a breed of strong draft horses which have been bred there since the beginning to date. These properties also include sandy and sandy-loam surface of roads which is comfortable for horses when trotting or galloping as well as vegetation cover on meadows and pastures which is a source of good quality and nourishing fodder (for more details see Chapter 2.a.1 Horses and the Landscape).

The methods of breeding and training of carriage horses in the Nominated Landscape have been fully preserved and therefore they are authentic. Horses are still kept in herds on pastures and they are trained in a traditional way as carriage horses – gradually used to the presence of people, to saddle and harness up to the training in pulling loads and finally towing a coach in a team, first with an older horse – a teacher and later in a team of more horses.

After the Nominated Landscape was modified in the early 19th century the mode of operation has not changed to date; the daily routine and annual rhythm of the herd movement in the Nominated Landscape have been preserved because it is determined by the specialisation of the farmsteads and their pastures as each of them caters for a particular herd of horses organised by their sex, ages and phase of training. This approach was established already in the early 19th century and has not changed to date and therefore preserved in its authentic form. The mode of operation of the entire stud farm based on specialisation of and co-operation between the farmsteads was set up in the early 19th century and has not changed; its authenticity has been preserved. The stables are still used for their purpose as intended at the time when they were built, including the surrounding pasture segments. The daily rituals as well as annual ones are still directly associated with the roads in the landscape which at the same time represent its composition axis. These rituals are a characteristic feature of the landscape and they are linked with horse breeding (for more details see Chapter 2.a.1 Horses and the Landscape).

¹⁵Under the relevant national law, the Site Manager is the recognised association for Kladruher horse breeding and is legally responsible for the administration of the Kladruher Horse Stud Book and for breeding Kladruher horses in line with the Breeding Goal, Breeding Programme and the Stud Book Rules approved by the Czech Ministry of Agriculture.

The preservation of the authenticity of a heritage site becomes a real challenge once there is no social demand for its original (authentic) function anymore and instead of it other substitution functions are sought after. These substitution functions can often clash with the original material, composition, design and lay-out of the heritage site or with the interest in preserving its original design and materials. There is no such threat to the Nominated Landscape – the social demand for Kladruher horses still exists which is a precursor for the preservation of the Nominated Landscape's authentic function which is breeding and training of carriage horses. This function has evolved over centuries and is closely associated with the material and formal composition of the landscape. Because the livelihood of the Site Manager depends on the preservation of the Nominated Landscape's authentic function, this is an incentive for him to safeguard all the preserved and constituent components – attributes of the landscape such as avenues, water courses, pastures, meadows and forests, including the Kladruher breed. This is the prerequisite for preservation of the landscape with all its authentic features and interfaces as well as methods of landscape management.¹⁶

¹⁶This is also covered by the monitoring system which, among others, includes monitoring of “the preservation of the Kladruher breed and traditional methods of landscape management” (see Corrigenda and Addenda to Chapter 6.a) the indicators of which are for example preservation of the landscape characteristics necessary for safeguarding of the Kladruher breed of carriage horses and use of land plots in line with their historic function and the size and health of the breeding herd of Kladruher horses.

Addendum to Sub-chapter 4.a.5

Major Property Restoration Projects under Preparation

Text of Sub-chapters 4 and 5 Major property restoration projects under preparation mentioned on page 171 and following (Czech version) and on page 176 and following (English version) of the Nomination Dossier is supplemented by the following:

Since the time the Nomination Dossier was submitted there have been changes in the projects development, their names and numbers against the data initially provided. Therefore there is the update on these projects below.

1) Management Plan for the Landscape for Breeding and Training of Ceremonial Carriage Horses at Kladruby nad Labem

The project goal is a draft of the new Management Plan for the Landscape for breeding and training of ceremonial carriage horses at Kladruby nad Labem to follow on the currently applicable Management Plan that was last updated in 2012.

The current Management Plan shall remain applicable until the new Management Plan becomes effective, that is after the draft is discussed by all the relevant authorities (see below) and after all their comments are settled.

The Site Manager prepared the terms of reference for the new Management Plan that were discussed with the Czech Ministry of Culture and with the Steering Group of the Landscape for Breeding and Training of Ceremonial Carriage Horses at Kladruby nad Labem. The Steering Group approved the terms of reference at its meeting on 29th June, 2018 and at the same time it approved the establishment of a new expert working group for the purposes of the new Management Plan that would cooperate with the authors of the draft.

The terms and conditions of the already closed tender for the new Management Plan draft are stated below:

1 THE OBJECT OF THE CONTRACT

The purpose and the objective of this Public Procurement Contract for a supplier of a new *Management Plan for the Landscape for Breeding and Training Ceremonial Carriage Horses at Kladruby nad Labem* (hereinafter as “the Management Plan” or “MP”) is the development of a new Management Plan taking into account the outstanding universal value of this landscape, its authenticity and integrity as well as the commitments pursuant to Articles 4 & 5 of the UNESCO Convention concerning the Protection of World Cultural and Natural Heritage, (Paris 1972).

The object of the Contract is the development of a new Management Plan based on the data contained in the *Nomination Dossier of the Landscape for Breeding and Training Ceremonial Carriage Horses at Kladruby nad Labem* (hereinafter as “the Landscape”) which is the key document for the inscription in the UNESCO World Heritage List, particularly taking into consideration the attributes of the OUV stated in Chapters 3.1.a, 3.1.b, 3.1.c, 3.1.d, and 3.3., and with reference to Chapter 2 of the Dossier as well as the Management Plan (its latest update from 2012, author New Visit I.t.d. and the available and applicable international guidelines and UNESCO templates for Management Plans and other documents provided to the Supplier by the Customer including the National Heritage Institute methodology for of the management plan and, if applicable, the bidding positions stated in Article 14, Sections 1 & 2 of Act No. 20/1987 Coll., on management of the national heritage.

To meet the purpose and objective stated above the Supplier must deliver the following:

Action 1: Analytical Part: checking the original data – update of the institutions, contracts, agreements, memoranda, bring the data in line with the status and scope of the international heritage management as specified in the Nomination Dossier, Chapters 1 & 2; compliance between the immovable properties listed in the Central Register of Cultural Heritage and Land Register; the issues of land-use planning. SWOT analyses.

Action 2: Proposals: update of the existing and development of a new text part of the document and its picture annexes (diagrams, maps, photographs etc.).

Action 3: MP Draft: to be discussed in the Steering Group for the Landscape for Breeding and Training Ceremonial Carriage Horses at Kladruby nad Labem (hereinafter as “the Steering Group” or “SG”).

Action 4: Final draft of the MP with the comments of the SG incorporated.

Action 5: The MP final draft to be reviewed by the relevant public administration bodies (these include the Czech Ministry of Agriculture, Czech Ministry of Culture, Czech Ministry of Environment, Regional Authority of the Pardubický Region, Přelouč Municipality with extended powers), local councils (communities), National Heritage Institute and Czech National Committee of ICOMOS – public discussion over the MP draft; addressing the suggestions and comments received and their incorporation into the document.

Action 6: The MP final draft to be discussed with the SG.

Deliverables

The key objective of the Management Plan is the preservation of the values for which the Landscape has been nominated for the inscription in the World Heritage List and the sustainable traditional use of the Landscape.

The new Management Plan should propose specific, meaningful and feasible measures to be implemented over a period of six years from the date of the approval of the new Management Plan; the Management Plan should also indicate the sequence and timing of such measures.

Therefore the draft of the Management Plan shall:

- (a) Identify the condition of the Landscape and its development limits taking into consideration the preservation of the values stated in the Nomination Dossier,
- (b) Indicate plans for the preservation of the Landscape values, and
- (c) Formulate recommended measures to be implemented in a particular sequence.

Pursuant to the commitments stated in Articles 4 & 5 of the Convention Concerning

the Protection of the World Cultural and Natural Heritage, the Management Plan should, in addition to measures aimed at the preservation of the nominated Landscape, outline the following guidelines concerning:

- (i) Labelling of the entire Landscape as a UNESCO World Heritage site as well as labelling of its significant parts and components of its tangible assets;
- (ii) More efficient protection of the Landscape with other tools than legal instruments only to prevent its damage and mismanagement;
- (iii) Presentation of the Landscape values to the general public.

The scope of the Management Plan

The scope of the Management Plan draft should correspond to the structure used in the international best practice.

Requirements to be satisfied by the Supplier

The Supplier will make necessary arrangements to perform the Contract by means of its expert team.

2 CO-OPERATION WITH THE CUSTOMER

The Supplier is required to be open with the Customer, communicate and interact with him on a regular basis and jointly specify the process and each step in order that the deliverables meet the project goals. The Supplier will closely co-operate with the specialists referred to by the Customer.

1. The Supplier is required to co-operate with the Customer by means of regular face-to-face communication, by electronic mail and over the telephone.
2. The Supplier must allow an authorised representative of the Customer to participate in the implementation of actions stated in the Contract.
3. As part of the Contract performance the Supplier commits to present, ahead of time, the outcomes of each stage to the members of the Steering Group, expert working group if such a group is established by the Customer for this purpose and relevant public administration bodies including public discussion with institutions and members of the general public.

- Estimated costs of the new Management Plan: € 13,000.00;
- Project stage: in progress;
- Estimated date of the Management Plan draft final version: VIII/2019.

2) Partial conversion and revitalization of the original Manor House garden

First stage – Demolition of the former catering premises, boiler house and coach house

The goal is the demolition of the obsolete and useless constructions from 1970s without any architectonic and historic value located on a part of the former Manor House garden (the original farm house plot) in close vicinity of the buildings at the main farmstead, more precisely next to the Manor House at Kladruby nad Labem. Hand in hand with the demolition, reclamation of the plots is planned as described below (see the project Second stage).

- Project implementation period: 07/2018 – 11/2018;
- Estimated costs: € 270,000.00;
- Project stage: in progress.

Photographs illustrating the ongoing project:



Fig.12: Demolition of the building from 1970s underway. Western front.



Fig.13: Demolition of the building from 1970s underway. Separation and ecological disposal of building waste.

Second stage - Conversion and revitalization of the former Manor House garden

The aim of this stage is to draft the project documentation for the works specified below on the basis of historical, archeological and other surveys:

2a) Conversion of the former productive part of the Manor House garden (kitchen garden)

The current use of the site and the damage caused to its historical values caused by the modifications and development in the second half of 20th century (see the first stage of this project) call for the conversion of the area according to the modern trends of garden and landscape architecture offering range of activities to the visitors of all generations.

Removal of the existing administrative buildings will open up enough area to be developed and offer attractive facilities for the visitors. In future the area will serve the visitors waiting for the tours of the property who should be attracted by proposed presentations (e.g. panels about the breeding and training of horses, the landscape, etc.). This should attract the attention of visitors so that they were not tempted to venture in the stud farm premises. Since the landscape and the Kladruby nad Labem farmstead are visited by people of all generations, the draft should respect this fact and provide for the separate activities for children – a playground, and for adults – educational programme and exhibitions and presentations. The main theme of the activities for children as well as adults will be horses, their breeding and the history of the Nominated Landscape. Hence the site should be adapted for the purposes of visitor centre and for education.

2b) Revitalization of the former Manor House garden area not affected by the development and construction from the second half of 20th century unlike its productive part.

The revitalization should revive the appearance from the end of 19th century. This part of revitalization will be coordinated with the project of Revitalization of the Cultural Landscape and Selected Historical Premises of the National Cultural Heritage of Kladruby nad Labem Stud Farm – restoration of historical premises including restoration of a small Paddock stable (1865) housing old retired horses because this stable are located in this area.

A distinct element in this area till the beginning of 20th century had been also a stream that was piped and buried underground. The revitalization plans to uncover it.

b1) Revitalization of the former Manor House garden ornamental section

The refurbishment of this section shall be sensitive and shall respect its historical and conservation value. The respect will apply particularly to mature trees that frame the existing composition. The activities proposed in this area will be quiet not to disturb the calm atmosphere of the place and people working in the offices located in the Manor House.

In the western part of the site there is shaped boxwood (*Buxus*) hedge and busts of horses. This valuable composition shall be preserved.

In the eastern part there is a circular boxwood and spruce trees (*Picea glauca* 'Conica'). The area will be equipped with street furniture - benches and rest areas.

b2) Restorations of the areas connecting the former Manor House garden and the surroundings

Currently the connecting areas have mixed functions and the restoration will correspond with the changes of the surrounding areas. The connecting section will connect the Manor House garden and "pastures – training grounds" and the traffic will be adjusted to prevent collisions between visitors and horses in training. The traffic shall be regulated by barriers – fencing, enclosures, hedges, etc. to define clearly the areas of farm activities.

b3) Restoration of the pasture – training grounds adjacent to the former Manor House garden

The pasture area is primarily designed for training of horses. The proposal will take into account the training function as well as creation of suitable conditions for visitors who could learn about the training through practical demonstrations. At the moment the area has no clear composition, the individual plots should be designed in such a way so as to secure suitable facilities for the visitors to watch the training of horses.

b4) Restoration of historical alleyways – ornamental section

Řečany historical alleyway shall be preserved for its main function – communication axis without compromising its importance as the composition axis. The traffic in the alleyway will be regulated so as to prevent collisions between the visitors and stud farm operations. Two more axes run from the starting point of this alleyway: one of them (Selmice) runs at the edge of the area addressed and the second one (the axis running in the direction of Josefov farmstead) is visually suppressed by the development from the second half of 19th century, yet it still exists. The design will now respect this visually suppressed axis and no obstacles will be placed in its route to break it.



Fig. 14: The area addressed shown in the orthophotography. Legend: red colour: ornamental garden, blue colour: farming facilities, purple colour: connecting area between the former Manor House garden and the surroundings, yellow colour: pastures and training grounds.

- Implementation period: 2019 – 2021;
- Estimated costs: 280.000,00 €;
- Stage of the project: Currently the call for the project of partial adaptation and restoration of the former Manor House garden is being drafted.

3) Car park in the farmyard of the National Stud Farm in Kladruby nad Labem

The project will result in 92 new parking spaces and reserved spaces for 5 buses. The project will also include planting of vegetation and placement of street furniture for visitors' greater comfort. The car park is with hard surface is located in the farm yard that already served for a few years as a temporary car park. This car park that is now under construction is next to the new catering premises for employees and visitors that replaced the demolished building in the former Manor House garden (see the previous project) and that also houses washrooms and toilets and 11 rooms for the visitors. The walking distance from the car park located away from the Manor House and the main farmstead not to disturb the overall visual impact, is three minutes. The Information Centre in the listed Classicist building of the former Emperor's public house in the village square is on the route.

- Implementation period: 07/2018 – 11/2018;
- Estimated costs: € 650,000.00;
- Stage of the project: in progress.

Pictures showing the project:



Fig. 15: Construction of the car park in the farm yard, National Stud Farm in Kladruby nad Labem.

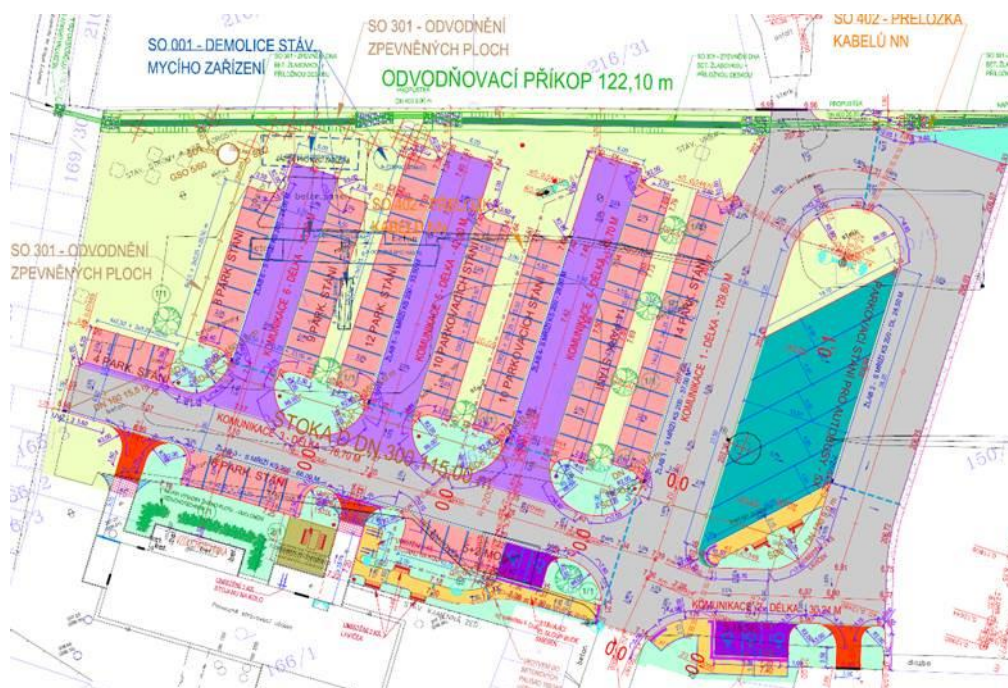


Fig. 16: Detailed drawing of the car park in the farm yard of National Stud Farm in Kladruby nad Labem.

4) Revitalization of the cultural landscape and selected historical buildings of the National Heritage Site of the Kladruby nad Labem Stud Farm – restoration of historical buildings

4a) Barn by Františkov farmstead

The goal of the project is the restoration of the historical pillar hay barn from the first half of 19th century (one out of four in the Nominated Landscape which is currently under restoration, the remaining three will be gradually restored) by Františkov farmstead. The hay barn which is now being

restored suffered in the past from insensitive construction interventions and its restoration is a part of the overall restoration project of historical buildings at Kladruby nad Labem National Stud Farm and in future it will be used for its original purpose, i.e. to store hay and straw.

- Implementation period: 08/2018 – 11/2018;
- Estimated costs: 600.000,00 €;
- Stage of the project: in progress

Pictures illustrating the first stage of the project:

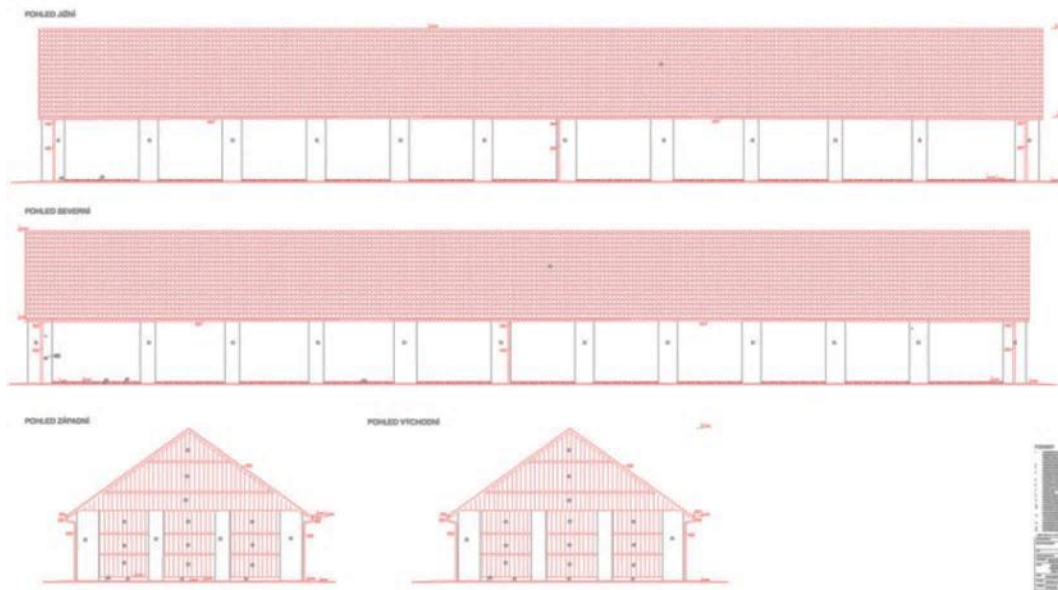


Fig. 17: Sections of the building documentation – front views (northern, southern, eastern and western).



Fig. 18: Restoration of the hay barn pillars.

4b) Restoration of historical Paddock stable (including the revitalization of vegetation surrounding the building)

This project addresses the current unsatisfactory condition of the small stable called Paddock. The restoration of the unused stable shall remove the inappropriate modern modifications and return the premises to its original appearance and purpose from 1865. The project includes restoration and replacement of the damaged parts of the structure (preserved traditional hand-crafted timber trusses, beams ceilings and roofing), replacement of interior plumbing and replacement of modern windows, doors and gates by replicas of historical windows, doors and gates, re-plastering and decorating of interior walls and re-pointing of external brickwork. After the restoration the stable will be used to house old and already retired horses. The restoration works will also include revitalization of the adjacent white fencing with the accompanying vegetation (all that according to the historical building surveys, dendrochronological analysis and other surveys). In the stage of implementation the project will be coordinated with the project of Conversion and Revitalization of the area adjacent to the former Manor House garden.

- Estimated costs: 350,000.00 €;
- Stage of the project: in progress;
- Implementation period: IX/2019-IV/2021.

Picture illustrating the project:

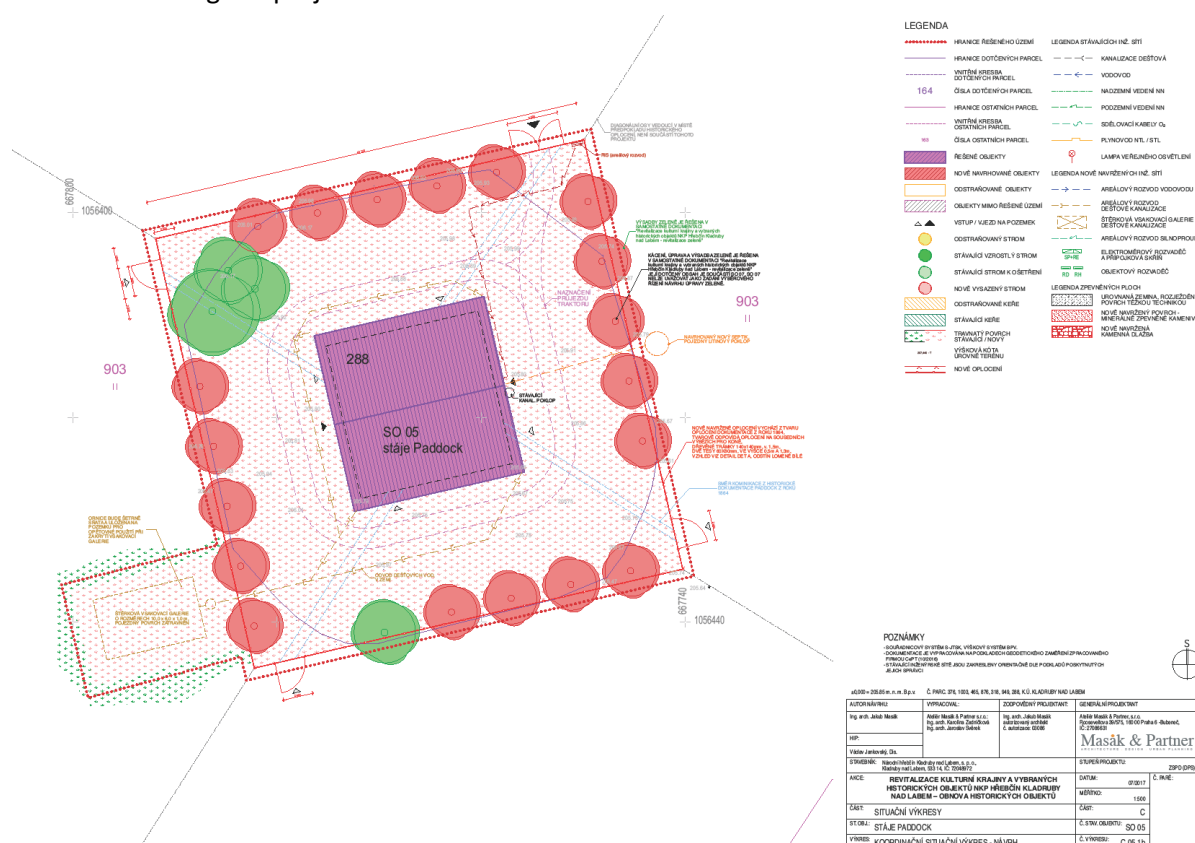


Fig. 19: Coordination layout drawing of the historical stable - Paddock.

4c) Restoration of building no. 3 in Kladruby nad Labem

The goal of the project is revitalization of the former vicarage and school building located on Kladruby nad Labem village square. The building was built in approximately 1730 in the Classicist

style and the ongoing works should restore its original appearance respecting its historical and constructional development. In one part of the building there will be offices for the employees of the National Stud Farm at Kladruby nad Labem including the archive and the other part will serve as a post office for the general public.

- Implementation period: 08/2017 – 06/2019;
- Estimated costs: 850,000.00 €;
- Stage of the project: in progress.

Pictures illustrating the project:

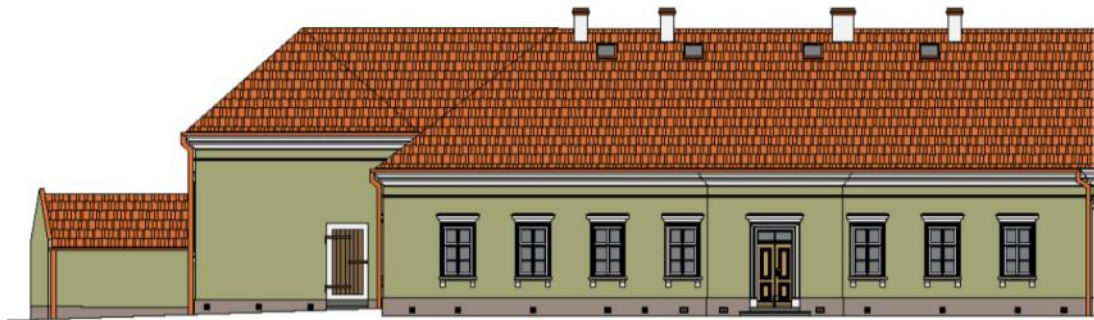


Fig. 20: Visualization of the western facade of the building.

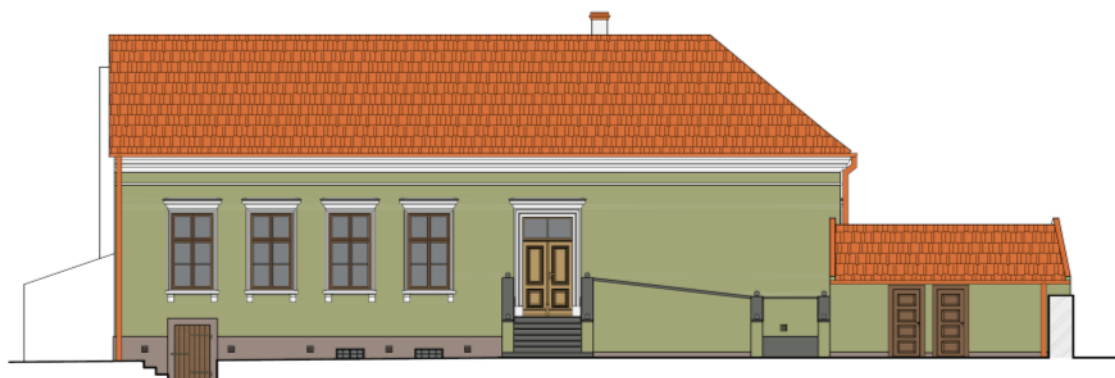


Fig. 21: Visualization of the eastern facade of the building

5) Revitalization of the water system

The project follows on the already completed project of the rehabilitation of the Elbe oxbow lakes (2006-2008). The goal is to revitalize the backbone of historical system of water ditches, canals, watercourses etc. managed by the National Stud Farm at Kladruby nad Labem. The revitalization will include maintenance, repairs and restoration with the aim to maximize water retention in the Nominated Landscape in times of draught and thus prevent losses of pastures, drop in hay yield and potentially also landscape drainage to prevent waterlogging of pastures and meadows resulting in the deterioration of fodder quality. The main task is the removal of sediments and regular cutting of vegetation which prevent a free water flow. The water system restoration will include also removal of mud from Cihlářský rybník (a pond) supplied by a branch of the Kladrubský canal that among others serves for horse wading under saddle and in hand as part of their training. The project will also include repairs of Kladrubský canal from 18th century which supplies the landscape with water from the Elbe River and drains it, as well as repairs of gates, foot bridges, culverts on natural and man-made watercourses in the Nominated Landscape. It will also include the drafting of new Manipulation Rules subject to Act no. 254/2001 Col. on Waters and on the Amendment of Some

Laws (Water Act) as amended that should reflect the needs of the landscape irrigation and drainage. The obligation to draft Manipulation Rules is determined by the Přelouč City Council Water Authority.

- Implementation period: 2019–2021;
- Estimated costs: € 600,000.00;
- Stage of the project: terms and conditions of public procurement for the draft of project documents are being prepared.

Pictures illustrating the project:



Fig. 22: Example of the water system in the landscape serving also for training of horses under saddle.



Fig. 23: A gate regulating inflow of water from Opatovický Canal to Kladrubský náhon supplying the landscape with water.

6) Revitalization of poplar and main lime tree avenues, oak and fruit trees avenues, including clumps of trees in pastures

The project goal is to secure continuous revitalization of linear plantings and groups of trees in the pastures. The approach to every single vegetation element will be differentiated according to its landscaping function using the principal documents, i.e. the rules stipulated in the Agreement concluded in 2016 between the Czech Republic Ministries of Agriculture, Culture and Environment on the General Principles of Restoration and Further Development of the National Heritage Site of the Kladruby nad Labem Stud Farm (see the Nomination Dossier Annex 6 Other Documents), measures quoted in the Summary of Recommended Measures for the Site of Community Importance at Kladruby nad Labem (CZ0533698) which follows on the Agreement mentioned above. The Summary was compiled by the Czech Agency for Nature Conservation and Landscape Protection in cooperation with the heritage management bodies and it is also included in the Nomination Dossier, Annex 6 Other Documents. During the project preparation and implementation the already developed List of Woody Plants will be applied. This List specifies woody plants that must be preserved because they are in the core area where there are habitats of protected species living on the Site of Community Importance at Kladruby nad Labem (more details about the List in 5.c.3 Means of Conservation of the Site of Community Importance. Its partial web application, i.e. passport of 1636 trees is accessible at the following address: <http://vool.cz/nZqFN>).

The revitalization will combine several different methods:

- One-off revitalization – applicable to small vegetation elements – i.e. in case of solitary trees or groups of solitary trees the one-off renewal will be preferred after the end of their life cycle. In case of linear plantings and alleyways this one-off method of revitalization shall be preferred only if their length does not exceed 100 meters with the exception of completely damaged vegetation elements. This method will also be used in fruit tree avenues.
 - Sectional revitalization – preferred in case of main linear communications along the main composition axes (Selmická avenue, Řečanská avenue) and avenues along the backbone roads – the revitalized sections will have to be at least 100 meters long. It is expected this sectional revitalization shall be completed in 20 years time.
 - Replacement of individual trees – shall be applied in the lines of poplars, lines of trees along watercourses and in all other places where the linear planting does not have to consist of the same age trees.
-
- Period of revitalization: Between 2019 – 2021 the priority goal will be preservation of new plantings from 2016-2018, treatment and stabilization of the existing woody plants, revitalization of solitary trees and tree clumps and clearance of self-seedlings in their vicinity, renewal of fruit tree alleyways and complementation of the existing plantings of young trees in alleyways and groups with the local genetic material.
 - Estimated total costs: € 310,000.00 (total of the items below)
 - Restoration of fruit tree avenues – € 150,000.00;
 - Treatment of existing woody plants – € 100,000.00;
 - Planting of woody plants (except for fruit woody plants and Mošnice park¹⁷)
 - Stage of the project: drafting of project terms of reference terms for the development of project documentation is in progress.

¹⁷Mošnice park is subject to a different project.

7) Revitalization of Mošnice Landscaped Park

Mošnice area is a landscaped park used for walking, horse riding and coach rides. The park roads are also used for training of horses in hand and hay is harvested in the meadows.

In the second half of 20th century a pheasantry was founded there which affected the original composition of the belt, solitary trees or smaller clumps of trees in the meadows. In 1973 the clumps of trees were skirted with the plantings of spruce trees. These plantings, preferred as the most suitable environment for pheasant breeding, damaged the original composition. The vegetation inside the newly created groups was not maintained anymore and the clumps of trees became overgrown by self-seeded vegetation. One of the contributors to this deterioration was the uneven terrain (depressions) in places of the former Elbe River branches that were not manually cut and became overgrown by self seedling vegetation.¹⁸ Several hundred years old solitary oaks became part of the groups and their habitat was damaged. The spatial structure has changed from the scattered clumps of trees and solitary trees into connected groups with spruce on the edges. The spruces were planted usually in several rows close to one another sometimes even 1.5 x 1.5 meters. The condition of these spruce hems is thus unsustainable and within a few years their major disintegration is inevitable. The Site Manager of the Nominated Property thus commissioned a project that consists of the elimination of some of the vegetation according to the following plans:

¹⁸Long term sustainability of this project thus requires also purchase of suitable technology. The traditional manual cutting with scythes is too labour intensive and inefficient in terms of production. On the other hand the common mowing machines are not suitable for mowing the uneven terrain.

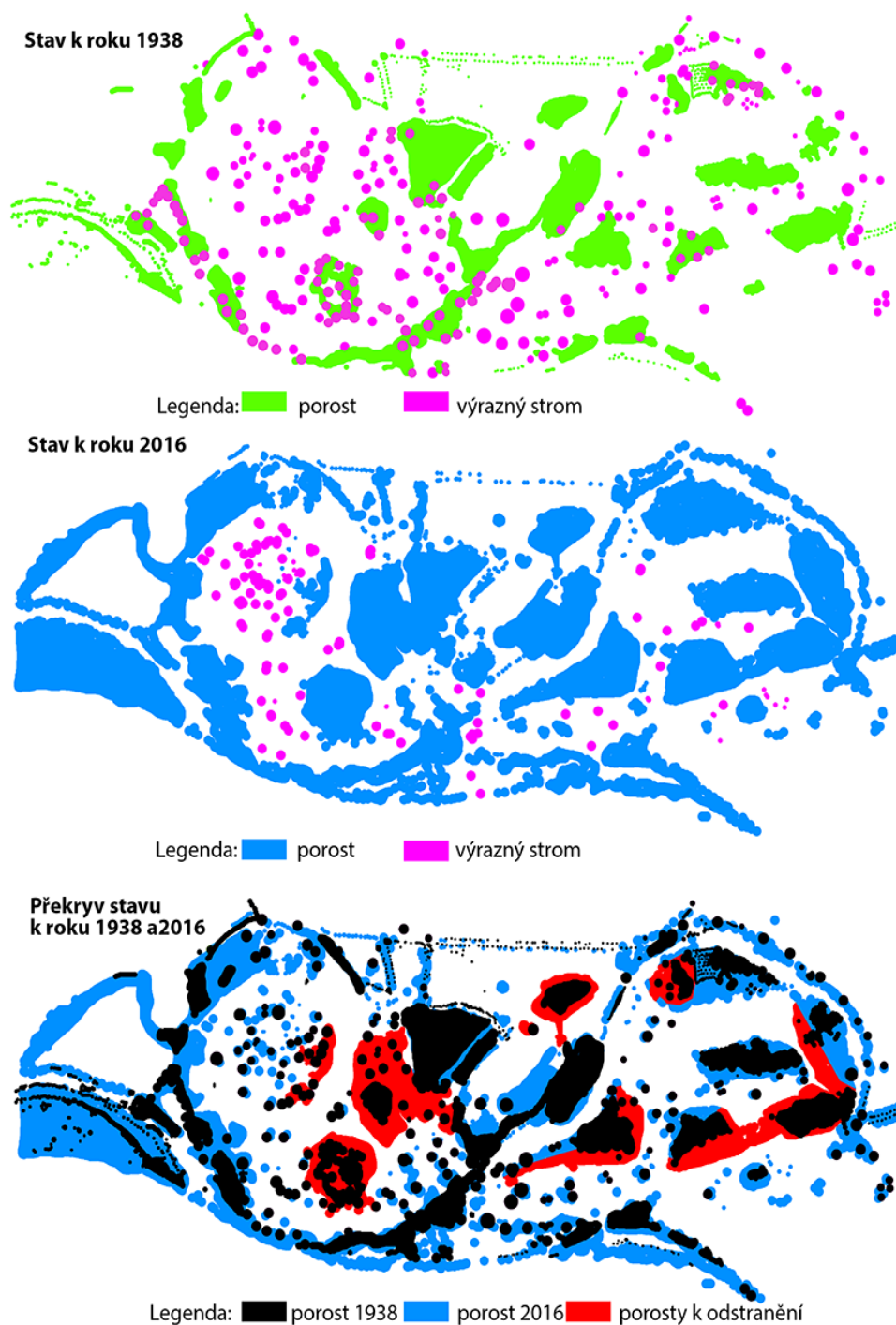


Fig. 24: Charts illustrating the historical development of the connected vegetation.

Text in the Charts:

Interpretation of historical development of vegetation connection

Situation by 1938

Key: green: vegetation pink: a distinct tree

Situation by 2016

Key: blue: vegetation pink: a distinct tree

Overlap of the situations by 1938 and 2016

Key: black: vegetation 1938 blue: vegetation 2016 red: vegetation to be cleared away

The situation in 1938 renders a redrawn aerial map. Pink colour marks distinct trees, usually solitary ones or small scattered clumps. Vegetation is marked in green.

The situation in 2016 again renders a redrawn aerial map. Pink colour marks solitary trees or small scattered clumps. Vegetation is marked blue.

Overlap of situations in 1938 and 2016 renders the difference between the two; that is a larger area of connected vegetation marked in red colour. Black colour marks the vegetation situation in 1938 and the blue colour marks the situation from the aerial map in 2016.

The charts prove that the connected vegetation in 2016 covers much larger area. The vegetation marked in red shall be cleared away to restore the valuable historical composition. Self seeded vegetation in terrain depressions in place of the former Elbe River branches will also be cleared.

During the project preparation the Agreement concluded in 2016 between the Czech Ministries of Agriculture, Culture and Environment on the General Principles of Restoration and Further Development of the National Heritage Site of the Kladruby nad Labem Stud Farm will be followed (see Nomination Dossier, Annex 6) and also the measures stipulated in the Summary of Recommended Measures for the Site of Community Importance at Kladruby nad Labem CZ0533698 which follows on the mentioned Agreement and which is also mentioned in the above Annex. During the project preparation and implementation the already developed List of Woody Plants will be applied. This List specifies woody plants that must be preserved because they are in the core area where there are habitats of protected species living on the Site of Community Importance at Kladruby nad Labem (CZ0533698).

- Implementation period: 2019–2020;
- Estimated costs – € 500,000.00;
- Stage of the project: Application for EU funds (Operation Programme Environment) has been submitted.

The former hunting lodge will be demolished and the former pheasantry aviaries removed. However these jobs are not included in this project, neither from the financial nor management point of view. These buildings are owned by the National Stud Farm at Kladruby nad Labem and they will be removed without any replacement.

Addendum to Chapter 5.c Means of Implementing Protective Measures

New Sub-chapter 5.c.3 Nature conservation measures aimed at safeguarding of the Site of Community Importance

The specific and several centuries long use of the Nominated Landscape has resulted in an area rich in habitats of many rare animal species.

The mosaic of specific biotopes primarily consists of pastures, regularly cut riparian meadows, oxbow lakes in various stages of succession, lines of trees and the Mošnice Park. From the nature conservation perspective there is a unique representation of old broadleaf woody plants, often growing as solitary trees or lining the roads. These are mainly oaks, limes, willows and poplars. There are cavities and rotten wood in trunks and branches of these trees. This creates favourable habitats for colonies of bats, many rare bird species nest in them and in particular, there are populations of rare insect living there.

In 2016 as part of Natura 2000 programme a Site of Community Importance for two insect species – hermit beetle and flat bark beetle - was declared under the code CZ 0533698 Kladruby nad Labem (hereinafter as the Site of Community Importance at Kladruby nad Labem) (see Annex 1 to the Nomination Dossier Maps, Plans and Schemes, Map no. 003 and the Nomination Dossier – Chapter 5.b Protective Designation).

The specific way of life of Hermit beetle (larvae developed only in branch cavities where there is enough rot; adult specimens fly only occasionally usually less than several dozen metres) the population of which lives on the site, is a direct evidence that for many centuries there have been veteran trees present in the local landscape.

The designation of Kladruby nad Labem Site of Community Importance succeeded particularly because of an excellent communication between the nature conservation agencies, heritage management bodies and Site Manager of the Nominated Property. In 2016 the Agreement on General Principles and Further Development of the National Heritage Site of the Stud Farm at Kladruby nad Labem was signed which is attached to the Nomination Dossier in Annex 6 Other Documents. In this agreement the Czech Ministry of Agriculture and the Czech Ministry of the Environment agreed on the general principles and further development of the core area of the Nominated Landscape (see Annex 1 Maps, plans and schemes, Map 003) that is on key principles of the restoration of vegetation important for the Nominated Landscape composition and functional arrangement. On the other hand the Agreement protects the key interests of nature conservation by preventing potential conflict of interests between heritage management and nature conservation.¹⁹

The continuous presence of veteran trees in the Nominated Landscape is an indispensable prerequisite for the preservation of rare insect species as well as environment-friendly use of pastures and meadows the area of which is stable and corresponds to the size of the herd. One of the points in the trilateral intergovernmental agreement was the obligation to compile the List of Woody Plants of the top priority for the preservation of the core area where there are the habitats of the protected species - hermit beetle (*Osmoderma eremita*) and flat bark beetle (*Cucujus cinnaberinus*) - on the Site of Community Importance at Kladruby nad Labem (hereinafter as the "List"). This List was put together by experts straight in the field in 2016 - 2017. The final document contains a detailed list of woody plants and it is divided in two subsets – the main list and the supporting list. In total 1,636 trees were listed and marked on the site of the Nominated Landscape, more specifically on the Site of Community Importance at Kladruby nad Labem, of which 625 were included in the main list and the remaining 1011 in the supporting list. In addition to the text part

¹⁹ Another institutional tool for addressing potential conflict of interest between nature conservation and heritage management is the Memorandum on the Establishment of the Steering Group for the Landscape for Breeding and Training of Ceremonial Carriage Horses. This Memorandum is in Corrigendum to Annex 6 of the Nomination Dossier.

which describes the detailed methodology of the tree selection process and comments on the list from different aspects, a web application was developed which allows accurate localisation and identification of individual trees in the field using a mobile device with GPS (mobile telephone, tablet) including a photograph and brief description of the tree and girth at breast height. (Application is available at the following address: <http://vool.cz/nZqFN>). When selecting trees for the list the safety requirement stated in the Agreement was taken into consideration which outlined the safe zones where people and horses are frequently present (primarily trees outside these zones were selected to avoid the possibility that an old tree falls down at places where there is a high probability of the occurrence of people and horses). These zones are also shown in the web application. This application with the list of priority woody plants and the core areas is used in practice not only for nature conservation purposes but also during the preparation and implementation of property restoration projects such as Restoration of the Mošnice Park (for more details see the Addendum to Sub-chapter 4.a.5 Major Property Restoration Projects under Preparation).

Another important document to preserve the rare insect species on Site of Community Importance at Kladruby nad Labem which was drafted pursuant to the Agreement mentioned above, is the Summary of Recommended Measures for the Site of Community Importance at Kladruby nad Labem. This document was developed by the Czech Agency for Nature Conservation and Landscape Protection and jointly approved by the Kladruby nad Labem National Stud Farm and heritage management bodies. It outlines a set of recommendations and principles for tree management on the Site of Community Importance at Kladruby nad Labem (this Summary is in the Nomination Dossier, Annex 6 Other Documents). This set of recommendations and measures is expected to be used during some project under preparation which are listed in Addendum to Sub-chapter 4.a.5 Major Property Restoration Projects under Preparation. The site of Community Importance at Kladruby nad Labem is protected by the relevant laws (Act no. 114/1992 Coll., on nature protection and landscape conservation as amended and other regulations stated in the Nomination Dossier, Sub-chapter 5.c.1 Overview of Protective Measures. In this respect the executive state administration body is the Agency for Nature Conservation and Landscape Protection (for more details see the Nomination Dossier, Sub-chapter 5.c.2 Means of Implementing Protective Measures) within the remit set in the Act related regulations stated above.

The regular monitoring is essential for the assessment of the effectiveness of the rare species protection on the Site of Community Importance. The Agency for Nature Conservation and Landscape Protection does the monitoring of the entire Natura 2000 programme in the Czech Republic which includes the Site of Community Importance at Kladruby nad Labem as part of the regular reporting on the condition of the system to the European Commission.

From the nature conservation perspective the future preservation of the Nominated Landscape values is crucial. However, it must always be remembered that horse breeding will always have a priority in this area and that thanks to horses, their breeding and training these rare insect species are present on site (and not the other way round).

Addendum to Chapter 5.h Visitor facilities and infrastructure

The text of Chapter 5.h *Visitor facilities and infrastructure* presented on p. 206 and following of the Czech version, and on p. 214 and following of the English-language version of the Nomination Dossier shall be supplemented as follows:

The Nominated Landscape is widely promoted to the public by a network of 40 Tourist Information Centres (one of them is located in Kladruby nad Labem) which functions under the methodological guidance of the Pardubice Regional Authority. This system provides for coordinated presentation of factually accurate information. In addition, the Nominated Property enjoys considerable media attention (for more details see Addendum to Annex 6 *Other Documents – New Annex f*), boosted by press releases issued approximately every week by the Site Manager, who also gives press conferences on any development of greater significance, such as the signing of the Statement by Mayors supporting the nomination of the site for inscription in the World Heritage List (see Nomination Dossier, Annex 6 Other Documents) and the signing of the Agreement on General Principles of Restoration and Further Development of the National Heritage Site of the Stud Farm at Kladruby nad Labem, the annual opening of the main tourist season, etc. The Site Manager uses also other available instruments to inform the public, such as the new website (<https://www.nhkladruby.cz/>) presented in Czech, German and English, as well as Facebook (nhkladruby), mailchimp (<https://us15.admin.mailchimp.com/>), etc.

In 2018 the Site Manager applied for a grant from a strictly selective grant scheme of the Czech Ministry of Culture to support a project enabling, *inter alia*, a more comprehensive virtual tours of the Nominated Landscape (the working title of the project is: Presentation of the Values of the Nominated Landscape Including Use of Modern Information Technologies). The project will include, amongst other things, a set of explanatory panels located in the newly restored productive part of the Manor House garden (see 4 and 5: Major Property Restoration under Preparation) and will be dedicated to the breeding and training of horses in the Nominated Landscape and to the landscape itself in line with the implementation of the Strategy for Tourism which is outlined in Measure 10 of the Nomination Dossier (3.1.e Protection and management requirements).

In addition to audio guides mentioned earlier there are 15 professional guides - employees of the stud farm to interpret the cultural and natural heritage to visitors in Czech, English, German or Russian. The statistical details concerning the composition of visitors shown in a pie chart (see Nomination Dossier, chapter 5.h Visitor facilities and infrastructure) can be supplemented with the additional detail that the ratio between individual visitors and groups of visitors has fluctuated in recent years – individual visitors (including families) currently account for some 70 per cent and group visitors for around 30 per cent of all the visitors. The proportion of group visitors can of course be expected to rise in the future and the Site Manager plans to enable groups to visit the “open” landscape in the company of a guide of course, in carriage cavalcades, which has proven to be a success during the “St. Hubertus Ride” (see Nomination Dossier, Annex 2 Pictures of the Nominated Property, Fig. 111).

Foreign visitors account for approx. 30 per cent of all the visitors. They represent an exclusive group of clients with a specific interest in horse breeding. The self-governing bodies of the Pardubický Region, on whose territory the Nominated Landscape is situated, bear the focus on this type of clients in mind and the updated Strategy will take them into account.

As far as the regulation of the number of visitors is concerned, this is mentioned in other parts of the Nomination Dossier (see chapter 4.b Factors affecting the property, paragraph (iv)). In addition to the tried and tested reservation system, the price regulation will be also applied to limit the number of visitors, as no matter how desirable it is for the bred horses to become accustomed to human traffic, it is also necessary to ensure the essential peace and calm.

Addendum to Chapter 5.i Policies and programmes relating to the presentation and promotion of the property

The text of chapter 5.i Policies and programmes relating to the presentation and promotion of the property on p. 212 and following of the Czech version, and on p. 221 and following of the English version of the Nomination Dossier shall be supplemented as follows:

All the strategic documents adopted by the elected council of the Pardubický Region, *i.e.* by the representatives of a land area of 4,519 km² with 452 municipalities and a population of 518,000, which apply to the field of tourism, cyclotourism and horse-riding tourism (600 km of marked trails currently available) comply with the National Policy for Tourism in the Czech Republic for the Period 2014–2020 (see Nomination Dossier, Chapter 5.i Policies and programmes relating to the presentation and promotion of the property) and the Heritage Management Strategy in the Czech Republic for the Period 2017–2020 are focused on the sustainable use of cultural heritage situated in the region. This is also a fundamental requirement imposed by the public administration bodies of the Pardubický Region on all the proposals (projects, alterations, repairs) relating to the Nominated Landscape area of interest.

The valuable cultural heritage of the Pardubický Region includes many national heritage sites (one of them is the Nominated Landscape including the core herd of Kladruher horses and the set of historic buildings listed as national cultural heritage) and conservation areas among which is the Kladrubské Polabí (Kladruhy Elbeland) designated in 2015 where the Nominated Landscape and the Site of Community Importance under Natura 2000 are located. The Site of Community Importance is situated in the Nominated Landscape - (for more and specific detail see the Nomination Dossier, Chapter 5.b Protective designation and Annex 1 of the Nomination Dossier – Map 003).

The Pardubický region gives out approx. € 800,000 in annual subsidies to tourism (approx. € 1,400,000 annually to culture and heritage management). As a matter of principle, the Pardubický Region proceeds strictly selectively in the allocation of subsidies to projects relating to the above-mentioned unique heritage to guarantee and give preference in all regards to quality over quantity, and that especially in putting together a mix of PR activities and selection of future Nominated Landscape client (visitor) target groups, who preferably are expected to be active, intellectually demanding tourists interested in the gentility of horse teams connected with the cultural heritage of the landscape. The unique network of marked cross-country walking trails (see Nomination Dossier, Chapter 5.h Visitor facilities and infrastructure), the connection to the international Elbe Cycle Route to Hamburg (1,200 km) as well as the easy travelling (by horse-drawn carriage) distance to the Berlin-Prague-Brno-Vienna railway corridor (Řečany nad Labem railway station) are the prerequisite for best possible access by environmentally friendly transport.

The tourist attraction of the Nominated Landscape rests on its unique historic heritage, its historic-aesthetic values, preserved functional integrity and fully preserved original function – breeding and training of horses. The latter are the main reason for visits by members of the professional community as well as by sophisticated tourists with respect for tradition and history. Horse breeding is in fact a visible symbol of the whole Pardubický Region – the symbol of a horse can be found on the coat of arms of the municipality of Kladruhy nad Labem, the regional capital Pardubice and Pardubický Region (see fig. 25, 26 and 27).

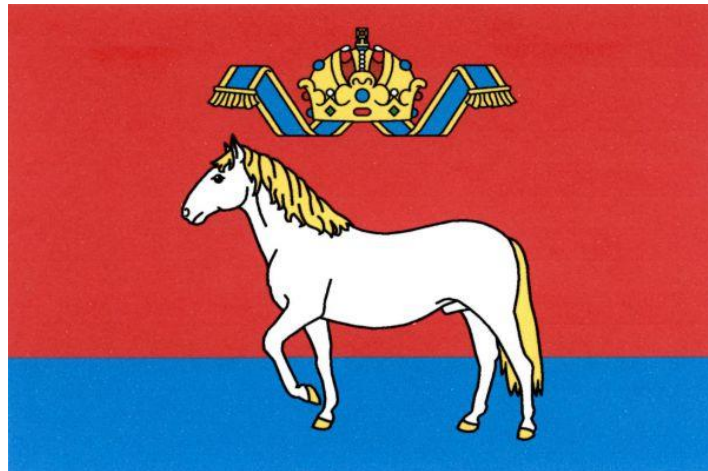


Fig. 25: Flag of the municipality of Kladruby nad Labem

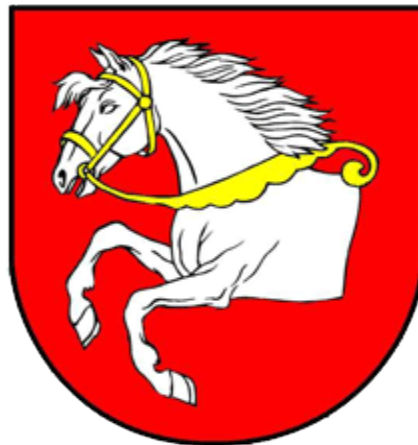


Fig. 26: Coat of arms of the town of Pardubice

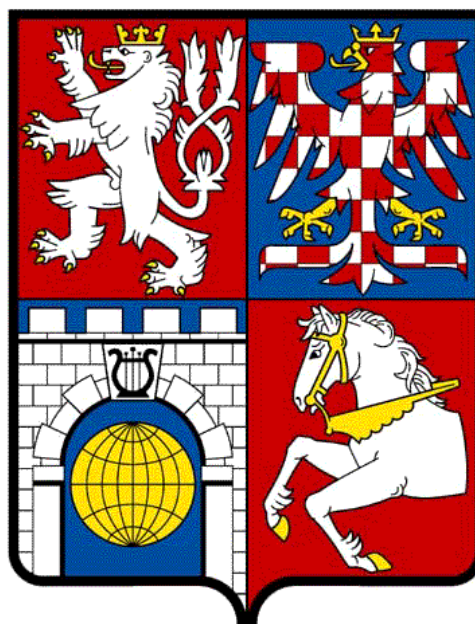


Fig. 27: Coat of Arms of the Pardubický Region

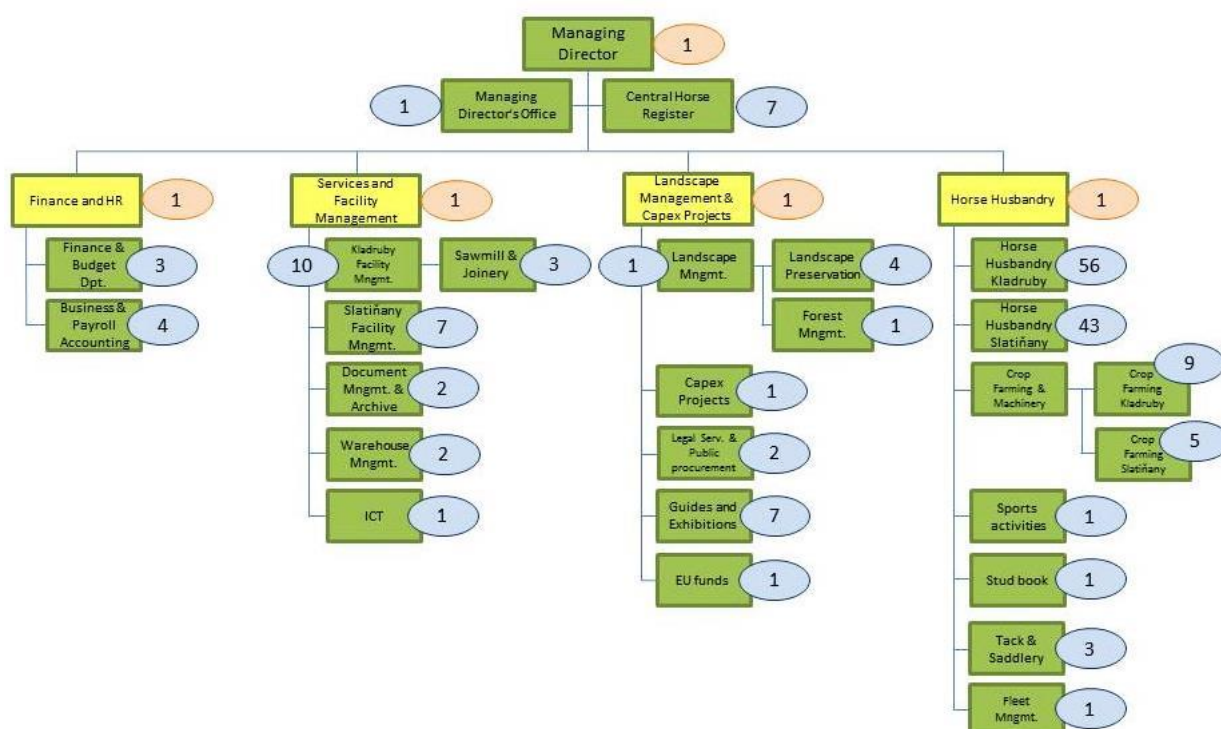
Should the landscape be inscribed in the World Heritage List, the Pardubický Region authorities, or more accurately the tourism agency governed by them, plan synergy with another heritage site located on the territory of the region, which has already been inscribed in the World Heritage List - Litomyšl Castle. This national heritage site is only 74 km away from the Nominated Landscape. The Pardubický Region authorities plan to spread out a wide choice of possible experiential destinations¹ on the imaginary line connecting the Nominated Landscape and Litomyšl, designed both for the professional community and for tourists. The implementation of this plan counts on the application of the relevant regional grant scheme, on the activities of the agency founded by the region and on the 40 tourist information centres located on its territory.

Although visitor services available on site are relatively well developed, it is presumed that Measure 10 (see Nomination Dossier, chapter 3.1.e Protection and management requirements) will have to be implemented in the nearest future.

Addendum to Chapter 5.j Staffing levels and expertise (professional, technical, maintenance)

The text of chapter 5.j Staffing levels and expertise (professional, technical, maintenance) presented on p. 225 and following of the Czech version, and on p. 235 and following of the English version shall be supplemented as follows:

Schematic diagram of the organisation set-up of the National Stud Farm at Kladruby nad Labem, the Nominated Property Site Manager:



Note: The figures next to the individual positions give the number of employees.

Addendum to Chapter 6.a Key indicators for measuring state of property conservation

Corrigendum:

In Table 008 on p. 227 of the Czech version of the Nomination Dossier (p. 237 of the English version) the correct name of Indicator No. 3 is **Preservation of Kladruher horse husbandry and of traditional landscape management**.

Corrigendum and Addendum:

On p. 228 of the Czech version of the Nomination Dossier (p. 238 of the English version) the correct name of Indicator 3 is: **Preservation of Kladruher horse husbandry and of traditional landscape management**.

Another aspect of the property included under this indicator, besides those already listed in the Nomination Dossier, is the Wellbeing of the Kladruher breeding herd.²⁰ The Site Manager is already monitoring this aspect (see 2.a.2 Kladruher breed).

The list of aspects included under Indicator 3 after the above-mentioned correction of its name and supplementation is:

3 – Preservation of Kladruher horse husbandry and of traditional landscape management

- Wellbeing of the Kladruher herd. Monitored by the Site Manager.
- Nominated Landscape character necessary for safeguarding the Kladruher breed of carriage horses in it. Monitoring is carried out by the Site Manager in line with the relevant laws and regulations.
- Traditions and intangible heritage associated with horse breeding. Monitoring is carried out by the Site Manager.
- External factors impacting the environment for carriage horse breeding (traffic load, tourism, pests, noise levels, air pollution and other types of loads generated outside the property site). Monitoring is carried out by the Site Manager.
- Use of plots of land in a way corresponding to their historic functions. Monitoring is carried out by the Site Manager.
- Functional hydrological regime. The Site Manager carries out monitoring in line with the relevant laws and regulations.
- Biological value of the site. Monitoring is carried out by the Agency for Nature Conservation and Landscape Protection of the ČR.

²⁰ The breeding herd of 65 mares and 4 studs in white colour is the part of the Stud Farm at Kladruhy nad Labem national heritage site and as such is subject to the same strict protection rules as the buildings, which are another component of this national cultural heritage. See Nomination Dossier Chapters 5.b Protective designation and 7.b.1 Documents referred to in Chapter 5.b.

Addendum to Chapter 6.c: Outcomes of previous reports

Regular output from the monitoring of the Site of Community Importance at Kladruby nad Labem CZ 0533698 will be part of the Regular Monitoring Reports regarding the condition of Natura 2000 sites in the Czech Republic drafted for the European Commission. These reports are drafted once every 6 years by the Agency for Nature Conservation and Landscape Protection of the Czech Republic for the Natura 2000 network as a whole and therefore include also findings concerning the Kladruby nad Labem site. With view to the date of its designation (6 February 2016 – see Nomination Dossier 7.b.1 Documents referred to in Chapter 5.b), the output from the monitoring of the site will be included for the first time in the report drafted for 2019.

Addendum to Annex 6 – Other Documents

New Annex f) Public Support

The motivation behind the landscape nomination is relatively old. It was not initiated by any academic or political circles. The first impulse was received by the Czech Ministry of Culture in 2005 from the Pardubický Region, namely from the representatives of the people from the region where the Nominated Landscape is located, who clearly reacted to the suggestions from the citizens of the region (see: Letter from the Pardubický Region Governor addressed to the Czech Minister of Culture included at the end of this Addendum) and local horse enthusiasts represented by the management of the National Stud Farm at Kladruby nad Labem who is the Site Manager for the Nominated Landscape.

The important fact demonstrating the grass-root support for the nomination is that the Nomination Dossier was drafted directly at the request of the Site Manager and not any academic or political group. The 14 authors (see: the bastard title of the Nomination Dossier) included three permanent employees of the National Stud Farm at Kladruby nad Labem, another four were contracted workers of the said organization at the time of Nomination Dossier preparation, while the rest of them were not in any way bound with the Site Manager under the labour code.

The public support was mainly expressed by mayors of local communities within the area of the Nominated Landscape or within its buffer zone, who participated in the works of the Steering Group for the Cultural Landscape of the Kladruby nad Labem Stud Farm, established in June 2016²¹ in order to address issues connected with the preparation of the Draft Nomination Dossier (cf. Minutes of the meetings of the Steering Group for the Cultural Landscape of the Kladruby nad Labem Stud Farm, included at the end of this Addendum).

Representatives or the mayors of the municipalities located within the Nominated Landscape area were also directly involved in the preparatory works for the Nomination Dossier and were asked to provide feedback to the Nomination Dossier (see: Letters to Mayors of municipalities within the cadastral area of the location regarding feedback to the Nomination Dossier, included at the end of this Addendum).

The Draft Nomination Dossier in Czech, in the version submitted to the World Heritage Centre in September 2017, was also published from October to December 2017 on publicly accessible websites of the National Stud Farm at Kladruby nad Labem in order to provide any possible feedback from the citizens to the management of the National Stud Farm regarding the nomination. The final version of the Nomination Dossier from January 2018 is still available at the address of the National Stud Farm Kladruby nad Labem in Czech: <https://www.nhkladruby.cz/nominace-unesco>, in English: <https://www.nhkladruby.cz/en/unesco-nomination>.

²¹ According to the Memorandum on the Establishment of the Steering Group (cf. Annex 6 of the Nomination Dossier - Other Documents) the Steering Group was set up for “the purposes of the final step”, namely in order to submit the Nomination Dossier. The links between the Steering Group and the public can be demonstrated not only by mayors participating in its meetings, but also by the fact that the chair of the Steering Group was the representative of the public, since he was the vice-governor of the Self-Government Body of the Pardubický Region, where the Nominated Landscape is located.

In June 2018 the Group was substituted by a new one named the Steering Group of the Landscape for Breeding and Training Carriage Horses at Kladruby nad Labem. According to the said Memorandum on the Establishment of this new Steering Group, as indicated in the Addendum to Annex No. 6 of the Nomination Dossier, the mandate of this Steering Group has a significantly wider scope when compared to the mandate of the former Steering Group.

Lately the aforementioned public support was also expressed in the Declaration of Local Government Representatives from involved municipalities, including those located directly within the area of the Nominated Landscape (see: Attachment 6 to the Nomination Dossier – Other Documents).

The same applies to the ongoing support of the Local Authorities of the Pardubický Region. One has to conclude that the civil servants from the Pardubický Region Office were very keen to provide materials to the authors of the Nomination Dossier, even exceeding the scope of their regular job description and some of them even joined the drafting team of the Nomination Dossier working for free.

The Draft Nomination Dossier was also repeatedly presented publicly and discussed directly with the locals from those municipalities (see: videos from public discussions available at the following address: <https://www.kladrubskepolabi.cz/category/video-z-verejnych-besed-a-vse-ostatni-na-tema-kladruby-nad-labem-a-unesco/> (Summary of the sessions may be found at the end of this Addendum).²²

National and regional media also provided updates on preparatory works on the Nomination Dossier (see: sample coverage from local and national press, included at the end of this Addendum). None of the press coverage included any negative comments or unfavourable tone in the media reaction to the information about the plans or the submission of the Draft for the World Heritage listing. Also the National Stud Farm Kladruby nad Labem informed media and, through the media, also the public both using the organizational website and special press conferences on the progress of the nomination process, e.g. on 27 September 2017 about signing of the Draft Dossier for World Heritage Listing by the representatives of respective ministries, or on 7 September 2018 about the evaluation mission of the UNESCO at the National Stud Farm Kladruby nad Labem, or on 12 January 2018 about the support for the candidacy of the National Stud Farm Kladruby nad Labem for the World Heritage Listing.

The professional community represented by the Czech National Committee ICOMOS supported the project by nominating one of its members to be the member of the Steering Group, and also by expressing openly its support in the letter of the head of the said committee (see: Nomination Dossier, Annex 6 - Other Documents).

²² The website is run by a private entity involved also in the promotion of knowledge regarding the topic.

Letter of the Governor of the Pardubický Region to the Czech Minister of Culture:



PARDUBICE REGION

Michal Rabas

Governor

Pardubice, 4th March 2005

Dear Sir,

In the letter of 10th February 2005 the head of the National Stud Farm Kladruby nad Labem, state owned company, Ms. Lenka Gotthardová asked me for the support in the matter of UNESCO World Heritage listing of the Kladruby stud farm.

Since the Kladruby stud farm is an impressive area in terms of historic and landscape values and has a centuries long tradition of breeding the unique breed of the Kladruber horse, whose core breeding herd of 65 mares and 4 stallions in white colour was designated a national cultural heritage by the Czech Government in 2001, therefore in my opinion, the whole site meets the strict criteria for the prestigious inscription in the World Heritage List.

Moreover, it is an attractive, “living” historic site in the Pardubický Region, extremely popular with tourists. Therefore I strongly recommend that this National Cultural Heritage Site is included in the future planning.

With kind regards,

Pavel Dostál Minister of Culture

Ministry of Culture

Maltézské náměstí 471/1 118 11 Praha 1, Czech Republic

-



PARDUBICKÝ KRAJ

Michal Rabas

hejtmán

V Pardubicích dne 4. března 2005

Vážený pane ministře,

dopisem ze dne 10. 2. 2005 se na mne obrátila ředitelka Národního hřebčína Kladruby nad Labem, státního podniku, paní Ing. Lenka Gotthardová se žádostí o podporu ve věci záměru zařazení kladrubského hřebčína na seznam památek Světového kulturního dědictví UNESCO.

Vzhledem k tomu, že kladrubský hřebčín je památkově i krajinářsky mimořádně působivým areálem s mnohasetletou tradicí chovu unikátního plemene starokladrubského koně, jehož kmenové chovné stádo v počtu 65 klisen a 4 hřebců v barvě bílé bylo v roce 2001 prohlášeno vládou ČR za národní kulturní památku, splňuje dle mého názoru náročná kritéria pro zápis do tohoto prestižního seznamu památkového dědictví.

Na území Pardubického kraje se jedná o návštěvnický mimořádně vyhledávanou a turisticky atraktivní „živou“ památku. Doporučuji zařazení této NKP do výhledového plánu.

S pozdravem

Vážený pan
Pavel Dostál
ministr kultury

Ministerstvo kultury
Maltézské náměstí 471/1
118 11 Praha 1

Excerpt from the minutes of the meeting of the Steering Group for the Cultural Landscape of the Stud Farm Kladruby nad Labem:

Note: Names of the mayors of involved municipalities who participated in the Steering Group meeting were colour-coded (in red)

Minutes of the meeting of the Steering Group for the Cultural Landscape of the Stud Farm Kladruby nad Labem Heritage Site

(“Steering Group” or “Group”)

held from 10 a.m. on 30 June 2017 at the National Stud Farm Kladruby nad Labem

Present:

Members:

Ing. Roman Línek, MBA
Ing. Vlastislav Ouroda, Ph.D.
Ing. arch. Tomáš Drdácký
Ing. arch. Naděžda Goryczková
Ing. Zdeněk Novák
Ing. Vladimír Dolejský, Ph.D.
Ing. Jiří Machek

Guests:

Ing. Radek Václavík, M.Sc.
Ing. Lenka Gotthardová, CSc.
Ing. Michaela Matoušková, MPA
Milan Kalina
Ing. et Ing. Tomáš Jiránek

Excused:

Mgr. Miluše Horská
Ing. Zdeněk Adamec, CISM
Jaromír Jan Chvojka

All referred to further herein without their academic titles.

Agenda:

1. Call to order, attendance check, quorum check, session agenda adoption
2. Review of the minutes and last session resolutions
3. General work schedule connected with UNESCO and cooperation with involved municipalities
4. A comparative study - including the feedback and presentation of the current version of the document (Ing. Jiránek)

5. Activity report from the Expert Working Group of the Minister of Agriculture for UNESCO listing and of the subteam for the Draft Nomination Dossier
6. Progress report for the Draft Nomination Dossier and overview of the nomination criteria (Mgr. Beneš, CSc.)
7. Kladruhy Region Development Study
8. ČEPS, a.s. company plans to double the current V401/801 lines
9. Any other business

Re.1: Call to order, attendance check, quorum check, session agenda adoption

- Roman Líněk called the Group to order, welcomed present members and guests and informed that mayors Lenka Gotthardová, Michaela Matoušková deputy mayor Milan Kalina would participate in the session up to item three.
- 7 members present, 3 members excused (see attendance list attached).
- Present Group members did not move for any changes in the agenda of the session.

Resolution

- The Steering Group has the required quorum.
- All present members adopted and approved the agenda of the session.

Re 2 / Review of the minutes and last session resolutions

The Steering Group during the previous session requested the Working Group to:

- Ensure the Draft Nomination Dossier is presented. – ***Draft Nomination Dossier is under development, individual sections are gradually filled with contents*** (working version of the document contents was provided for the Group Members to view).
- Strictly adhere to the presented schedule, whereby the deadline for submitting the preliminary nomination for the Czech Republic is in September 2017 and based on any possible comments it may be finally supplemented and officially submitted by the end of January 2018. – *realized on the ongoing basis*
- Clearly specify the scope of the nominated area (the so called core territory) for the potential future UNESCO heritage site. – *an updated map in the final version prepared based on the expert discussion regarding the topic will be available*

The Group on the previous session requested NHK to:

- Submit regularly at Group sessions an updated schedule for individual key steps (project plan) with the current progress. – ***fulfilled on the ongoing basis***
- Ensure that the cultural landscape is presented at the conference of the National Heritage Institute and ICOMOS in September 2017 in Prague. – ***under discussion with the vice president of the General Management of the National Heritage Institute, Mgr. Tomášek***

Resolution

- All present members adopted and approved the minutes from the previous session.
- Tasks assigned at the previous session were completed or are in the process of realization. Suggestions of the Steering Group members regarding how to further address tasks as they arise have been defined in the minutes in further items of the agenda.

Re 3 / General work schedule connected with UNESCO and cooperation with involved municipalities

- Radek Václavík introduced the current state of preparations of the Nomination Dossier to attendees. He emphasized how important it is to keep the inhabitants of involved and nearby municipalities informed, this is why today's session is attended by the mayor of Kladruby nad Labem municipality, Lenka Gotthardová, mayor of the Řečany nad Labem municipality, Michaela Matoušková and the deputy mayor of Selmice, Milan Kalina.
- All attendees were informed about the submission date for the Nomination Dossier, which is in September 2017, in October and November the draft will be submitted for comments to the UNESCO Secretariat and in January 2018 the final document will be signed and submitted to the Secretariat of the UNESCO World Heritage. The Nomination Dossier will include approx. 300 pages in 9 sections. Radek Václavík informed the attendees about the meeting with inhabitants that took place on 14 June 2017 at the National Stud Farm. Michaela Matoušková and Lenka Gotthardová requested that another similar meeting is organized. Attending Steering Group members agreed and decided it would be scheduled for September 2017. NHK management will prepare the invitation by 15 August 2017 and will send it to involved municipalities, who will share it with the citizens in their newsletters.
- Zdeněk Novák informed about an interesting option of using the so called "Protection plans for heritage preservation areas and heritage zones":
(1) the Regional Authority, subject to the discussion with the Ministry of Culture, the land use planning body 1) and the relevant municipality as stakeholders, may issue a general measure regarding protection of the heritage preservation areas and heritage zones or part thereof (hereinafter referred to as the "Protection Plan"), defining the way to secure cultural values of the heritage preservation area and heritage zones as far as the state historic conservation is concerned. The plan may also define for which properties, provided that they are not a cultural heritage site, but are in the heritage preservation area and a heritage zone, or for which types of works, including planting and cutting trees in public spaces (hereinafter "tree trimming"), the obligation of the owner (site manager, user) to request prior binding opinion under section 14 (2) is excluded.
(2) The Protection Plan may be issued for the period no longer than 10 years. If after the issue of the Protection Plan the Regulation Plan 1) for the heritage preservation area, the heritage zone or part thereof becomes effective, the terms and conditions of the Protection Plan that are inconsistent with the said Regulation Plan, shall become ineffective.

(3) The Protection Plan may be modified, should the cultural values of the said territory or the way of protecting these values by means of state historic conservation change. Once a Protection Plan Amendment is issued, paragraph 1 shall apply accordingly.

(4) An expert organization of the historic conservation body provides the Regional Authority free of charge expert resources, data and information that will serve as the grounds for issuing the Protection Plan.

(5) Once the Protection Plan becomes effective, the Regional Authority shall immediately review whether there are any grounds for submitting the draft according to section 17 (5).

(6) Formal elements and the content of the Protection Plan are defined by the Ministry of Culture in the executive regulation.

The proposed solution was welcomed by attending mayors.

Resolution

- The Steering Group takes note of information regarding this item.
- The Steering Group will from time to time invite representatives of the local self-government to their session.
- The Steering Group suggests that the Pardubický Region considers proclaiming a "Protection Plan of Heritage Preservation Areas And Heritage Zones."

T: on the ongoing basis

- The Steering Group agreed that the representatives of the local self-government may advise the chair of the Group and the chair of the Expert Working Group regarding all issues pertaining to the topic.

Re 4 / A comparative study - including the feedback and presentation of the current version of the document (Ing. Jiránek)

- The Group invited Tomáš Jiránek, who presented the progress on the comparative study and the historical development of the stud farm facilities.
- This was followed by the discussion and questions regarding the presentation.

Resolution

- The Steering Group requests that the author amends the comparative study according to the comments raised in the discussion.

Re 5 / Activity report from the Expert Working Group of the Minister of Agriculture for UNESCO listing and of the subteam for Draft Nomination Dossier

- Radek Václavík advised the Steering Group members about the current activities of the Working Group.
- Heuristic, prepared by the team of doc. PhDr. Ivana Ebelová, CSc., is being presented and amended on the ongoing basis.
- The comparative study is being prepared by Ing. Tomáš Jiránek – for details please see item 4 of the agenda.
- Updated version of the Management Plan (Ing. Tomáš Jiránek) – under development.

Resolution

- The Steering Group assigns the Expert Working Group the task of presenting current schedule of individual key steps and session minutes to the Group.

T: on the ongoing basis

- The Steering Group assigns the author the task of completing the Comparative Study and updating the Management Plan

T: immediately

- The Steering Group assigns the Expert Working Group the task of presenting the Nomination Dossier to the Group.

T: in September

Re 6 / Progress report for the Draft Nomination Dossier and overview of nomination criteria (Mgr. Beneš, CSc.)

Resolution

- The Steering Group takes note of this item.

Re 7 / Kladruby Region Development Study

Radek Václavík informed Group members that an agreement to complete the Development Study for the Kladruby Region was signed. It will be drafted by Institut projektového řízení a.s., represented by Ing. Michael Skalický, Ph.D., MBA. The study is to be delivered by 31 October 2017. The study will aim at reviewing the current state and proposing solutions in the following areas:

- the description of the current state and attractions in the area in question
- assessment of the potential opportunities in the area
- transport infrastructure
- travel services
- priority investments
- marketing tools
- references to strategic documents and land use plans of the municipality

Resolution

- The Steering Group takes note of the materials and requests a more detailed presentation.

Re 8 / ČEPS, a.s. plans to double the current V401/801 lines

Radek Václavík informed Group members of the plans by ČEPS, a.s. to double the current V401/801 lines between Týnec and Krasíkov. It is the shared area of the cultural historic values protection and a specific landscape that is significantly dependent on the conscious landscape composition, which defines its unique character. If the business plan is implemented, the values will be gravely violated.

Naděžda Goryczková noted that the risk is immense and that it would threaten the year-long work, a compromise is not an option. She asked the Pardubický Region for support. Vlastislav Ouroda supported N. Goryczková. Roman Línek promised to help in the matter.

Resolution

- The Steering Group strongly opposes to the doubling of the current power lines, a different solution has to be found. The Steering Group proposes that a letter is sent by the governor of the Pardubický Region and the head of the Steering Group to the Prime Minister of the Czech Republic objecting the said business plan.
- The Steering Group requests that the expert part of the letter with the "heritage protection justification and arguments" is prepared by 30 August at the Ministry of Culture or by the deputy minister Vlastislav Ourada, possibly in cooperation with the head of the National Heritage Institute, Naděžda Goryczková.

Re 9 / Any other business

Radek Václavík informed the Group that the second expert opinion for the warehouse facilities of Baseta is ready and will be available in September 2017.

He also shared the details of the meeting held at the Pardubický Regional Authority on 20 June 2017 regarding the renovation of the Řečanský Bridge. Bridge diagnostics will be run in September 2017. According to the expert opinion provided by the investor the current condition is allegedly irreparable and will probably lead to the adoption of some temporary measures for the bridge.

Resolution

- The Steering Group recommends that the matter should be subject to further discussions. The traffic situation should be addressed in a wider context in order to prevent any increased traffic through the area of the stud farm. The priority of the serious threat to presentation of the area proposed for the UNESCO World Heritage Listing nomination is still valid.

Re 10 / Conclusions

- Next session of the Steering Group will be held on 15 September 2017 at 10:00 a.m. in Kladruby nad Labem.

Attachments:

Attendance list

Instructions for the Kladruby Region Development Study

Documents regarding the ČEPS, a.s. business plan to double the current V401/801 power line between Týnec and Krasíkov.

Prepared by: Simona Králová

Approved by: Roman Líněk

Minutes
of the meeting of the Steering Group for the Cultural
Landscape of the Stud Farm Kladruby nad Labem
Heritage Site

("Steering Group" or "Group")

held from 10 a.m. on 15 December 2017 in the National Stud Farm
Kladruby nad Labem

Present:

Members:

Ing. Roman Línek, MBA
Ing. arch. Naděžda Goryczková
Ing. Zdeněk Novák
Mgr. Miluše Horská
Ing. Zdeněk Adamec, CISM
Ing. arch. Tomáš Drdáký
Ing. Jiří Machek

Guests:

Ing. Radek Václavík, M.Sc.
Mgr. Michal Beneš, CSc.
Ing. Lenka Gotthardová, CSc.
Ing. Michaela Matoušková
Ivan Moravec

Excused:

Jaromír Jan Chvojka
Ing. Vladimír Dolejský, Ph.D.
Ing. Vlastislav Ouroda, Ph.D.

All referred to further herein without their academic titles.

Agenda:

1. Call to order, attendance check, quorum check, session agenda adoption
2. Review of the minutes and last session resolutions
3. General work schedule connected with UNESCO and cooperation with involved municipalities
4. Kladruby Region Development Study
5. Nomination Dossier – version including incorporated comments of involved bodies
6. Any other business.
7. Conclusions

Re.1: Call to order, attendance check, quorum check, session agenda adoption

- Roman Línek called the Group to order, welcomed present members and guests and informed that Lenka Gotthardová, Michaela Matoušková and Ivan Moravec would participate in the session up to item four.
- 7 members present, 3 members excused (see attendance list attached).
- Present Group members did not move for any changes in the agenda of the session.

Resolution

- The Steering Group has the required quorum.
- All present members adopted and approved the agenda of the session.

Re 2 / Review of the minutes and last session resolutions

Resolution

- All present members adopted and approved the minutes from the previous session.
- Tasks assigned at the previous session were completed or are in the process of realization. Suggestions of the Steering Group members regarding how to further address tasks as they arise have been defined in the minutes in later items of the agenda.

Re 3 / General work schedule connected with UNESCO and cooperation with involved municipalities

- Radek Václavík informed attendees about the timeframe for works related with UNESCO. As of 15 December 2017 the Nomination Dossier is ready for submission, translation into English and processing by the graphic design studio. The graphic part will be prepared at the turn of 2017 and 2018. By 5 January 2018 proofreading of the specialised English terminology will be completed and handed over for editing. By 10 January 2018 the final editing will be performed, by 25 January 2018 graphic designs for the Nomination Dossier will be prepared as well as printing and binding, by 26 January 2018 the Nomination Dossier will be handed over to the Heritage Site Protection Department at the Ministry of Culture to be signed by the Minister of Culture and Agriculture, by 31 January 2018 till 4 p.m. the Nomination Dossier will be officially delivered by the delegation to the WHC UNESCO Secretariat in Paris.
- Naděžda Goryczková thanked everyone who contributed to the preparations of the Nomination Dossier and said that the Dossier is of excellent quality. Zdeněk Adamec thanked the National Heritage Institute, the experts and the Ministry of Culture for their contribution. Radek Václavík thanked involved municipalities for their cooperation. Michaela Matoušková thanked on behalf of Řečany nad Labem for communication with inhabitants. Lenka Gotthardová expressed support for the Nomination Dossier and proposed that the municipalities show their support by way of a letter or a declaration. The document would be attached to the Nomination Dossier.

Resolution

- The Steering Group takes note of information in this item.
- Thank you to all stakeholders.

Re 4 / Kladruby Region Development Study

Roman Líněk informed the Steering Group members that the fair copy of the Development Study for the Kladruby Region will be ready by the end of January 2018. The deadline was prolonged for quality reasons. During the next session of the Steering Group the document will be presented to the members. The draft was presented on the session today. Radek Václavík announced that the working group had read the Development Study and has some comments to it. Roman Líněk stated that in mid-January 2018 a meeting will be held regarding the topic and the comments will be addressed then. Naděžda Goryczková stated that the study includes inconsistent terminology that should follow the Management Plan. Zdeněk Adamec recommended that prior to the January meeting another working group meeting should be held by the working group and authors of the Development Study.

Resolution

- The Steering Group takes note of this item.
- The Steering Group requests that the meeting attendees send their written comments and suggestions by 10 January 2018.

Re 5 / Nomination Dossier – version including addressed comments of stakeholders

Michal Beneš (Nomination Dossier Supervisor) thanked everyone who had sent their comments to the Draft UNESCO Nomination Dossier. He stated that each and every comment was reviewed individually by the team of authors and processed, with 90 % of them approved. Michal Beneš suggests that the Steering Group agrees that the Nomination Dossier should be presented to the Minister of Agriculture and the Minister of Culture for signing and the Nomination Dossier should be sent to the WHC UNESCO Secretariat. The comments sent by the WHC UNESCO Secretariat were relatively scarce and were mainly of a formal nature. Also Michal Beneš stated that the comparative study was expanded by further stud farms. He also noted that the nomination title was amended to: **LANDSCAPE FOR BREEDING AND TRAINING CEREMONIAL CARRIAGE HORSES IN KLADRUBY NAD LABEM**. Michal Beneš thanked for sending the NPÚ and ČNK comments to ICOMOS. Michal Beneš expresses his admiration for the authors' team.

Resolution

- The Steering Group takes note of the statement by Michal Beneš.
- The Steering Group approved the review of comments.
- The Steering Group requests that the graphic and language fair copy is prepared and signed by the Minister of Culture and the Minister of Agriculture.
- The Steering Group approves the Nomination Dossier: "Landscape for Breeding and Training Ceremonial Carriage Horses in Kladruby nad Labem."

- The Steering Group thanks Michal Beneš for his role as the Supervisor as well as members of the subteam and the working group for their exceptionally good work.

Re 6 / Any other business

Michal Beneš informed Steering Group members about the further procedure once the Nomination Dossier is filed with WHC UNESCO Secretariat. On 31 January 2018 the Nomination Dossier will be submitted after the review by the international ICOMOS institute which may raise additional questions within 14 days. In June-July 2018 the World Heritage Committee will select approx. 35 nominations for review. If NHK is selected, then an official ICOMOS delegate will visit Kladruby nad Labem in summer in order to examine the Nominated Landscape, whether it is authentic, if the integrity declaration is true, and will review the Management Plan. Michal Beneš recommends to work on the Management Plan already in spring. In May 2019 the final decision of ICOMOS will be known as far as recommending or not recommending the nomination for UNESCO listing is concerned. If the nomination is not recommended for the UNESCO listing, Michal Beneš recommends to officially withdraw the nomination.

Radek Václavík informed the Group that the second expert opinion for the warehouse facilities of Baseta was prepared. The open market value at the time and place according to the expert opinion amounts to CZK 60,800,000. Talks will be held with the owner of warehouse facilities. Also Radek Václavík informed Group members that in cooperation with the Ministry of Agriculture, NHK managed to recover historic areas from Lesy ČR, s.p., in the total area of approx. 150 ha.

Then Radek Václavík advised the members of the Steering Group that NHK was approached by the head of the stud farm in Marbach regarding their involvement in the UNESCO project. It is a three year project that interferes with the NHK nomination. NHK has been cooperating with the Marbach stud farm within ESSA.

Resolution

- The Steering Group takes note of the information received under the AOB item.
- The Steering Group requests that NHK prepares a preliminary overview of the steps that will follow after 31 January 2018 until 2019.
- The Steering Group recommends that NHK should organize an international conference.
- The Steering Group recommends that the nomination should be submitted now and independently.

Re 10 / Conclusions

- Next Steering Group session will be held in February 2018 in Kladruby nad Labem.

Attachments:

Attendance list

Prepared by: Simona Králová

Approved by: Roman Línek manu proprio

Minutes
of the meeting of the Steering Group for the Cultural
Landscape of the Stud Farm Kladruby nad Labem
Heritage Site

("Steering Group" or "Group")

held from 10 a.m. on 15 September 2017 in the National Stud Farm
Kladruby nad Labem

Present:

Members:

Ing. Roman Línek, MBA
Ing. Vlastislav Ouroda, Ph.D.
Ing. arch. Tomáš Drdáký
Ing. arch. Naděžda Goryczková
Ing. Zdeněk Novák
Ing. Jiří Machek

Guests:

Ing. Radek Václavík, M.Sc.
Mgr. Michal Beneš, CSc.
Milan Kalina

Excused:

Mgr. Miluše Horská
Ing. Zdeněk Adamec, CISM
Jaromír Jan Chvojka
Ing. Vladimír Dolejský, Ph.D.

All referred to further herein without their academic titles.

Agenda:

1. Call to order, attendance check, quorum check, session agenda adoption
2. Review of the minutes and last session resolutions
3. General work schedule connected with UNESCO and cooperation with involved municipalities
4. Draft Nomination Dossier
5. Kladruby Region Development Study
6. ČEPS, a.s. plans to double the current V401/801 lines – current information
7. Any other business.

Re.1 / Call to order, attendance check, quorum check, session agenda adoption

- Roman Línek called the Group to order, welcomed present members and guests and informed that deputy mayor Milan Kalina would participate in the session up to item three.
- 6 members present, 4 members excused (see attendance list attached).
- Present Steering Group members did not move for any changes in the agenda of the session.
- Roman Línek moved to the Steering Group members for the amendment to the agenda namely that minutes will be provided only for internal purposes to the involved representatives of the local self-government. Group members approved the motion.

Resolution

- The Steering Group has the required quorum.
- All present members adopted and approved the agenda of the session.

Re 2 / Review of the minutes and last session resolutions

Resolution

- All present members adopted and approved the minutes from the previous session.
- Tasks assigned at the previous session were completed or are in the process of realization. Suggestions of the Steering Group members regarding how to further address tasks as they arise have been defined in the minutes in later points of the agenda.

Re 3 / General work schedule connected with UNESCO and cooperation with involved municipalities

- Jiří Machek and Radek Václavík informed all attendees about the press conference organized on 27 September 2017 in the National Stud Farm in Kladruby n. L., attended by the Minister of Agriculture, Mr. Marian Jurečka and the Minister of Culture, Mr. Daniel Herman.
- Michal Beneš recommends that the Group members send their comments to the Draft Nomination Dossier by 15 October 2017 to the subteam that will review and process them accordingly. Then the Steering Group should receive at its next session the Draft Nomination Dossier in its final version (8 December 2017).
- Radek Václavík informed the Group members about the preparations to hold another meeting with general public at the National Stud Farm Kladruby nad Labem.

Resolution

- The Steering Group takes note of the information regarding this item.

- The Group will from time to time invite representatives of the local self-government to their sessions.

T: on the ongoing basis

- The Group agreed that the representatives of the local self-government may advise the chair of the Group and the chair of the Expert Working Group regarding all issues pertaining to the topic.

Re 4/ Draft Nomination Dossier (Mgr. Beneš, CSc.)

The position of the Supervisor regarding the Draft Nomination Dossier for the Landscape for Breeding Ceremonial Carriage Horses in Kladruby nad Labem for UNESCO World Heritage listing:

- The Supervisor pronounces that the requirements for filing the draft with the UNESCO Secretariat have been met, because it is prepared in the structure defined by international rules and regulations, except for section 7 b and the attachment with maps which is ready in terms of the subject matter, however, needs some final editing. The Supervisor recommends that the Draft is submitted for feedback with UNESCO without the outstanding section 7 b, since in this case the international convention allows it, provided that the produced Draft clearly states that section 7 b will be properly incorporated in the final wording of the Nomination Dossier. The Supervisor discourages from filing the Draft without the properly prepared map attachment.
The Supervisor believes that if the Draft is submitted for comments to UNESCO by 16:00 hrs on 30 September 2017, this will ensure that the final version of the Nomination Dossier does not contain mistakes that at the international review stage might be used against the nomination and might cause the Dossier to fail, if the round of comments was not applied and the definitive version of the Nomination Dossier was filed in January next year without it. The Supervisor believes such mode of action represents unnecessary risk.
- The Supervisor recommends that at the request of the National Stud Farm Kladruby nad Labem organization the Ministry of Culture, using its diplomatic channels, immediately sets up the date for submitting the electronic version of the draft and the hard copy of the maps.
- The Supervisor recommends to the members of the Steering Group of the Cultural Landscape of the Stud Farm in Kladruby nad Labem to submit their comments to the draft together with counter-proposals, so that they can be incorporated in the final version of the Nomination Dossier together with UNESCO comments. The Supervisor recommends a common date also for other commenting sites (involved local self-government authorities etc.).
- Also, the Supervisor recommends that the Národní hřebčín Kladruby nad Labem, without undue delay, however, no later than by 30 September 2017 prepares the schedule for further processing of the final version of the Nomination Dossier that would account not only for deadlines necessary to incorporate comments and translate the text, but also would provide time necessary for graphic editing of the hardcopy of the Nomination Dossier with some extra time for the official submission thereof.
- The Supervisor recommends that the substance of the Comparative Analysis, which is part and parcel of the Nomination Dossier, is expanded in

the final version to include more locations that breed carriage horses in Spain (alternatively Portugal or Italy) and the former Habsburg Netherlands, later referred to also as the Austrian Netherlands, namely the territory that stretched out where today's Belgium, Kingdom of the Netherlands and the Grand Duchy of Luxembourg are. These countries were ruled by the House of Habsburg whose members first started forming the Nominated Landscape, and quite possibly the landscape in the listed countries, alternatively, they found inspiration there to form the Nominated Landscape. The Supervisor believes that excluding these countries or their horse breeding landscapes from the comparative study is also a grave tactical mistake in the light of unarguable influence of national ICOMOS committees.

- The Supervisor further suggests that the definitive version of the Nomination Dossier should include also an unbinding schedule (forecast) for completing outstanding tasks from the Management Plan. Such schedule is not expressly required under international rules and regulations, however, they expressly recommend it.
- As far as the Management Plan is concerned, the Supervisor recommends that the Steering Group of the Cultural Landscape of the Stud Farm in Kladruby nad Labem addresses the implementation of the Management Plan at one of its future sessions, because, provided that the final version of the Nomination Dossier is accepted by the UNESCO International World Heritage Committee for international review, the Management Plan will be of interest to the representative (representatives) from the international evaluation team from ICOMOS, as well as during on site evaluation of the Nomination.
- The Supervisor wishes hereby to express his gratitude and appreciation to the authors of the Draft Nomination Dossier, who approached and implemented detailed comments to submitted texts in a responsible manner.
- The Supervisor declares his readiness for the 3rd supervision of the Nomination Dossier, if it is requested by the National Stud Farm Kladruby nad Labem, provided the conditions for such supervision exist.
- The Supervisor states that the Draft Nomination Dossier ("Draft") was prepared in an extremely short time with extreme commitment of some members from the team of authors. However, the Supervisor wishes to point out that some members of the team of authors failed to meet given deadlines and violated even the emergency schedule that was drafted after ineffective expiration of the original schedule. This affected the preparations of the Nomination Dossier, especially as far as the internal links between the subject matter are concerned which in turn endangered the output of the 2nd supervision of the Draft.
- Recommendation: The Supervisor recommends that in future, alternatively in the next stage of works on the final version of the Nomination Dossier which is to be submitted to the UNESCO Secretariat by 4:00 p.m. on 31 January 2018 at the latest, the contractual relations with authors are regulated in a way that will ensure they meet defined deadlines on the ongoing basis.

Resolution

- The Steering Group takes note of the opinion of the Supervisor.

- The Steering Committee approves the Draft Nomination Dossier and agrees that it is sent by the Czech Ministry of Culture to UNESCO headoffice by 30 September 2017.
- The Steering Group thanks Michal Beneš for his role as the Supervisor as well as members of the subteam and the Expert Working Group for their exceptionally good work.
- The Steering Group requests that ICOMOS, Ministry of Environment and Ministry of Culture are asked to provide their comments to the Draft Nomination Dossier by 15 October 2017.

Re 5 / Kladruby Region Development Study

Roman Líněk informed Steering Group members that Pardubický Region commissioned a Kladruby Region Development Study. It will be drafted by Institut projektového řízení a.s., represented by Ing. Michael Skalickým, Ph.D., MBA. The study was to be delivered by 31 October 2017. The deadline was prolonged for quality reasons until the end of November. During the next session of the Steering Group the document will be presented to the members.

Resolution

- The Steering Group takes note of this item.

Re: 6 / ČEPS, a.s. plans to double the current V401/801 lines – current information

Radek Václavík informed Group members of the plans by ČEPS, a.s. to double the current V401/801 lines between Týnec and Krasíkov. It is the shared area of the cultural historic values protection and a specific landscape that is significantly dependent on the conscious landscape composition, which defines its unique character. If the business plan is implemented, the Nominated Landscape values may gravely suffer. Roman Líněk informed about the talks with the above mentioned company where further mode of action was agreed upon. Further negotiations with ČEPS and ČEZ Distribuce are to follow.

Resolution

- The Steering Group takes note of item 6.

Re 7 / Any other business

Radek Václavík informed the Group that the second expert opinion for the warehouse facilities of Baseta is ready and will be available in late September 2017.

Roman Líněk informed Steering Committee members about the riding hall project for the Secondary School of Horse Breeding and Riding (SŠCHKJ) Kladruby nad Labem.

Resolution

- The Steering Committee takes note of the information under item AOB.

Re 10 / Conclusions

- The next Steering Group session will be held on 15 December 2017 at 10 a.m. in Kladruby nad Labem.

Attachments:

Attendance list

Prepared by: Simona Králová

Approved by: Roman Línek, mp

Letters sent to the mayors representing the communities situated in the Nominated Landscape. The letters ask them to comment on the Draft Nomination Dossier. The text of all letters is identical and they were addressed to the Lady Mayors of Kladruby nad Labem and Řečany nad Labem and Mayors of Selmice and Semín.



Dear Madam Mayor,

In accordance with the conclusions of the meeting and on the basis of the resolution of the Steering Group for the Cultural Landscape of the Stud Farm at Kladruby nad Labem (“Steering Group”) of 15 September 2017 I would like to inform you about the publication of the Draft Nomination Dossier titled “Landscape for Breeding and Training of Ceremonial Carriage Horses at Kladruby nad Labem” on the website of the National Stud Farm at Kladruby nad Labem.

The document is available in the section “Documents” at <http://www.nhkladruby.cz/nominace-unesco>. Due to its size, the downloading of the Dossier takes longer than usual.

Any suggestions should be sent electronically to vaclavik@nhkladruby.cz not later than 15 October 2017. Comments sent later will not be taken into consideration due to a firmly set schedule involving the partial activities of many stakeholders.

All suggestions will be dealt with and the final form of the document subsequently approved by the Steering Group for submission to the Secretariat of the UNESCO World Heritage Centre.

Thank you for
your cooperation.

Ing. Jiří Machek
Director



Účet vedený u České národní
banky 5039561/0710
Organizace byla zřízena podle
ustanovení § 54, odst. 2 zákona
č. 219/2000 Sb., o majetku

České republiky a jejím vystupování
v právních vztazích, ve znění pozdějších
předpisů a § 4b zákona č. 252/1997
Sb., o zemědělství, ve znění pozdějších
předpisů dne 15. 10. 2009

Vaše č.j.:
Naše č.j.: *NHK 1640 / 2017*
Ze dne: 29. 9. 2017
Vyřizuje: Ing. Radek Václavík, MSc.
Telefon: +420 724 652 022
e-mail: vaclavik@nhkladruby.cz

Počet listů: 1 Příloha: 0 listů

Vážená paní
Ing. Lenka Gotthardová, CSc.
starostka
Obec Kladruhy nad Labem
č. p. 110
535 01 Přelouč

Věc: Návrh nominační dokumentace „Krajina pro chov ceremoniálních kočárových koní v Kladrubech nad Labem“ k zápisu do Seznamu světového kulturního a přírodního dědictví UNESCO

Vážená paní starostko,

v souladu se závěry jednání a na základě usnesení Rady památky Kulturní krajina hřebčína v Kladrubech nad Labem (dále jen Rada památky) ze dne 15. září 2017 si Vás dovoluji informovat o zveřejnění návrhu nominační dokumentace s názvem Krajina pro chov ceremoniálních kočárových koní v Kladrubech nad Labem na webu Národního hřebčína Kladruhy nad Labem.

Dokument je k dispozici v sekci „Dokumenty“ na <http://www.nhkladruby.cz/nominace-unesco>. Vzhledem k jeho rozsahu může stahování trvat déle, než je zpravidla obvyklé.

Případné podněty zasílejte elektronicky na adresu vaclavik@nhkladruby.cz nejpozději do 15. října 2017. Na pozdější připomínky nebude brán zřetel vzhledem k pevně stanovenému harmonogramu, který v sobě zahrnuje dílčí činnosti mnoha zainteresovaných subjektů. Všechny podněty budou vypořádány a dokument následně schválen Radou památky do finální podoby pro předložení na Sekretariát Centra světového dědictví UNESCO.

Děkuji za spolupráci.

S pozdravem

Ing. Jiří Machek
Ing. Jiří Machek
ředitel

NÁRODNÍ HŘEBČÍN KLADRUBY NAD LABEM,
státní příspěvková organizace
533 14 Kladruhy nad Labem č.p. 1
IČ: 72048972 DIČ: CZ72048972

Národní
hřebčín
Kladruhy
nad Labem

Národní hřebčín Kladruhy
nad Labem, s.p.o., č. p. 1
533 14 Kladruhy
nad Labem

IČO: 72048972
DIČ: CZ72048972
Tel.: +420 466 736 530
ID DS: mw6u68u

podatelna@nhkladruby.cz
www.nhkladruby.cz



Účet vedený u České národní
banky 5039541/0710
Organizace byla zřízena podle
ustanovení § 54, odst. 2 zákona
č. 219/2000 Sb., o majetku

České republiky a jejím vystupování
v právních vztazích, ve znění pozdějších
předpisů a § 4b zákona č. 252/1997
Sb., o zemědělství, ve znění pozdějších
předpisů dne 15. 10. 2009

Vaše č.j.:
Naše č.j.: *NHK 1641* /2017
Ze dne: 29. 9. 2017
Vyřizuje: Ing. Radek Václavík, MSc.
Telefon: +420 724 652 022
e-mail: vaclavik@nhkladruby.cz

Počet listů: 1 Příloha: 0 listů

Vážený pan
Josef Veselý
starosta
Obec Selmice
č. p. 28
535 01 Přelouč

Věc: Návrh nominační dokumentace „Krajina pro chov ceremoniálních kočárových koní v Kladrubech nad Labem“ k zápisu do Seznamu světového kulturního a přírodního dědictví UNESCO

Vážený pane starosto,

v souladu se závěry jednání a na základě usnesení Rady památky Kulturní krajina hřebčína v Kladrubech nad Labem (dále jen Rada památky) ze dne 15. září 2017 si Vás dovoluji informovat o zveřejnění návrhu nominační dokumentace s názvem Krajina pro chov ceremoniálních kočárových koní v Kladrubech nad Labem na webu Národního hřebčína Kladruby nad Labem.

Dokument je k dispozici v sekci „Dokumenty“ na <http://www.nhkladruby.cz/nominace-unesco>. Vzhledem k jeho rozsahu může stahování trvat déle, než je zpravidla obvyklé.

Případné podněty zasílejte elektronicky na adresu vaclavik@nhkladruby.cz nejpozději do 15. října 2017. Na pozdější připomínky nebude brán zřetel vzhledem k pevně stanovenému harmonogramu, který v sobě zahrnuje dílčí činnosti mnoha zainteresovaných subjektů. Všechny podněty budou vypořádány a dokument následně schválen Radou památky do finální podoby pro předložení na Sekretariát Centra světového dědictví UNESCO.

Děkuji za spolupráci.

S pozdravem

Ing. Jiří Machek
Ing. Jiří Machek
ředitel

NÁRODNÍ HŘEBČÍN KLADRUBY NAD LABEM,
státní příspěvková organizace
533 14 Kladruby nad Labem č.p. 1
IČ: 72048972 DIČ: CZ72048972

Národní
hřebčín
Kladruby
nad Labem

Národní hřebčín Kladruby
nad Labem, s.p.o., č. p. 1
533 14 Kladruby
nad Labem

IČO: 72048972
DIČ: CZ72048972
Tel.: +420 466 736 530
ID DS: mw6u68u

podatelna@nhkladruby.cz
www.nhkladruby.cz



Účet vedený u České národní
banky 5039561/0710
Organizace byla zřízena podle
ustanovení § 54, odst. 2 zákona
č. 219/2000 Sb., o majetku

České republiky a jejím vystupování
v právních vztazích, ve znění pozdějších
předpisů a § 4b zákona č. 252/1997
Sb., o zemědělství, ve znění pozdějších
předpisů dne 15. 10. 2009

Vaše č.j.:
Naše č.j.: **NHK 1669 / 2017**
Ze dne: **29. 9. 2017**
Vyřizuje: **Ing. Radek Václavík, MSc.**
Telefon: **+420 724 652 022**
e-mail: **vaclavik@nhkladruby.cz**

Počet listů: 1 Příloha: 0 listů

Vážená paní
Ing. Michaela Matoušková, MPA
starostka
Obec Řečany nad Labem
1. máje 66
535 13 Řečany nad Labem

Věc: Návrh nominační dokumentace „Krajina pro chov ceremoniálních kočárových koní v Kladrubech nad Labem“ k zápisu do Seznamu světového kulturního a přírodního dědictví UNESCO

Vážená paní starostko,

v souladu se závěry jednání a na základě usnesení Rady památky Kulturní krajina hřebčína v Kladrubech nad Labem (dále jen Rada památky) ze dne 15. září 2017 si Vás dovoluji informovat o zveřejnění návrhu nominační dokumentace s názvem Krajina pro chov ceremoniálních kočárových koní v Kladrubech nad Labem na webu Národního hřebčína Kladruby nad Labem.

Dokument je k dispozici v sekci „Dokumenty“ na <http://www.nhkladruby.cz/nominace-unesco>. Vzhledem k jeho rozsahu může stahování trvat déle, než je zpravidla obvyklé.

Případné podněty zasílejte elektronicky na adresu vaclavik@nhkladruby.cz nejpozději do 15. října 2017. Na pozdější připomínky nebude brán zřetel vzhledem k pevně stanovenému harmonogramu, který v sobě zahrnuje dílčí činnosti mnoha zainteresovaných subjektů. Všechny podněty budou vypořádány a dokument následně schválen Radou památky do finální podoby pro předložení na Sekretariát Centra světového dědictví UNESCO.

Děkuji za spolupráci.

S pozdravem


Ing. Jiří Machek
ředitel

NÁRODNÍ HŘEBČÍN KLADRUBY NAD LABEM,
státní příspěvková organizace
533 14 Kladruby nad Labem č.p. 1
IČ: 72048972 DIČ: CZ72048972

Národní
hřebčín
Kladruby
nad Labem

Národní hřebčín Kladruby
nad Labem, s.p.o., č. p. 1
533 14 Kladruby
nad Labem

IČO: 72048972
DIČ: CZ72048972
Tel.: +420 466 736 530
ID DS: mw6u68u

podatelna@nhkladruby.cz
www.nhkladruby.cz



Účet vedený u České národní
banky 5039561/0710
Organizace byla zřízena podle
ustanovení § 54, odst. 2 zákona
č. 219/2000 Sb., o majetku

České republiky a jejím vystupování
v právních vztazích, ve znění pozdějších
předpisů a § 4b zákona č. 252/1997
Sb., o zemědělství, ve znění pozdějších
předpisů dne 15. 10. 2009

Vaše č.j.:
Naše č.j.: *NHK 1664 / 2017*
Ze dne: 29. 9. 2017
Vyřizuje: Ing. Radek Václavík, MSc.
Telefon: +420 724 652 022
e-mail: vaclavik@nhkladruby.cz

Počet listů: 1 Příloha: 0 listů

Vážený pan
Jaroslav Trubač
starosta
Obec Semín
č. p. 138
535 01 Přelouč

Věc: Návrh nominační dokumentace „Krajina pro chov ceremoniálních kočárových koní v Kladrubech nad Labem“ k zápisu do Seznamu světového kulturního a přírodního dědictví UNESCO

Vážený pane starosto,

v souladu se závěry jednání a na základě usnesení Rady památky Kulturní krajina hřebčína v Kladrubech nad Labem (dále jen Rada památky) ze dne 15. září 2017 si Vás dovoluji informovat o zveřejnění návrhu nominační dokumentace s názvem Krajina pro chov ceremoniálních kočárových koní v Kladrubech nad Labem na webu Národního hřebčína Kladruhy nad Labem.

Dokument je k dispozici v sekci „Dokumenty“ na <http://www.nhkladruby.cz/nominace-unesco>. Vzhledem k jeho rozsahu může stahování trvat déle, než je zpravidla obvyklé.

Případné podněty zasílejte elektronicky na adresu vaclavik@nhkladruby.cz nejpozději do 15. října 2017. Na pozdější připomínky nebude brán zřetel vzhledem k pevně stanovenému harmonogramu, který v sobě zahrnuje dílčí činnosti mnoha zainteresovaných subjektů. Všechny podněty budou vypořádány a dokument následně schválen Radou památky do finální podoby pro předložení na Sekretariát Centra světového dědictví UNESCO.

Děkuji za spolupráci.

S pozdravem

Ing. Jiří Machek
Ing. Jiří Machek
ředitel

NÁRODNÍ HŘEBČÍN KLADRUBY NAD LABEM,
státní příspěvková organizace
533 14 Kladruhy nad Labem č.p. 1
IČ: 72048972 DIČ: CZ72048972

Národní
hřebčín
Kladruhy
nad Labem

Národní hřebčín Kladruhy
nad Labem, s.p.o., č. p. 1
533 14 Kladruhy
nad Labem

IČO: 72048972
DIČ: CZ72048972
Tel.: +420 466 736 530
ID DS: mw6u68u

podatelna@nhkladruby.cz
www.nhkladruby.cz

Samples of articles in the regional and national media on preparations of the nomination:

Inscription of the National Stud Farm at Kladruby in the UNESCO List

Topic: Minister of Agriculture
9.6.2016 13:00 Czech Radio Pardubice News

Pavla PILAŘOVÁ, news anchor

Today, the Ministries of Agriculture and Culture took a further step towards the inscription of the National Stud Farm in Kladruby in the UNESCO World Heritage List. Ministers Jurečka and Herman signed an agreement on establishing the Steering Group for this heritage site. According to the authorities, this is the final step towards the nomination of the stud farm.

National Stud Farm at Kladruby on the Road to Inscription in the UNESCO List

Topic: Minister of Agriculture
9.6.2016 Zemědělec (Agriculturalist, newsletter) p. 0 Enterprises, Animal Production
Eva Seifertová

The National Stud Farm at Kladruby nad Labem is on the way to being inscribed in the UNESCO World Cultural and Natural Heritage List. One of the oldest stud farms on the European continent breeds the Kladruher horse. Its breeding herd is in the national cultural heritage list and is the only living item protected as a heritage in the world. Today, Minister of Agriculture Marian Jurečka and Minister of Culture Daniel Herman signed a joint agreement on the establishment of the Steering Group for the Cultural Landscape of the Stud Farm at Kladruby nad Labem. The appointed Chairman of the Steering Group is Roman Línek, first deputy governor of the Pardubický Region. By establishing the Steering Group, the Czech Republic has entered the final phase during which it will make a binding application for the inscription of the heritage site in the UNESCO List.

National Stud Farm at Kladruby Running for UNESCO Inscription: The Oldest World Heritage Site of its Kind in the World

Topic: Minister of Agriculture
9.6.2016 blesk.cz p. 0 Culture

The National Stud Farm at Kladruby is drawing closer to inscription in the UNESCO World Heritage List. Minister of Agriculture Marian Jurečka and Minister of Culture Daniel Herman have signed an agreement on the establishment of a nine-member Steering Group to coordinate the transition. According to the ministers, by establishing the Steering Group the ČR has taken the final step towards making a binding application for inclusion among UNESCO World Heritage Sites.

The stud farm is expected to submit its application to UNESCO next year; it is assumed that it will then take another couple of years before the inscription in the List is completed. According to Minister Jurečka, in the future the stud farm could become just as popular with visitors as Český Krumlov is today.

Kladruby Stud Farm Getting Ready for UNESCO

10.6.2016 denik.cz p. 0 Home News

Minister of Agriculture

Prague – The National Stud Farm at Kladruby nad Labem is aiming for UNESCO. The Czech Republic has actually not submitted its application yet, but it would like to do so next year. “We believe we are entering the final phase and within the next couple of years the farm will get on the UNESCO list,” **Minister of Agriculture Marian Jurečka (KDU-ČSL)** said yesterday. “If we do achieve the inscription, the stud farm would be the first European site of its kind on the list.”

The state spent almost 349 million Czech crowns in the last two years on the restoration of the stud farm which occupies an area of 1,200 hectares. In this context, Minister of Culture Daniel Hermann pointed out that some 300 million crowns came from the European funds. “The entire cultural landscape creates an absolutely unique heritage site that will enrich the UNESCO list,” Herman added.

Stud Farm at Kladruby to Submit UNESCO Nomination in September

Topic: Ministry of Agriculture

15.2.2017 10:37 ČTK news agency p. Agriculture

Kladruby nad Labem (Pardubický Region) 15 February (ČTK) – The National Stud Farm at Kladruby nad Labem will submit the Nomination Dossier for inscription in the prestigious UNESCO World Heritage List. The Committee will assess the document and will have until February next year to request additional information. Then it will take two or three years to examine the eligibility of the application. Deputy Governor Roman Línek (KDU-ČSL) told ČTK today: “The assessment process never takes less than two years.”

According to Línek, the September deadline for submitting the dossier is very tight, but he believes it can be met. The Nomination Dossier is based on a comparative analysis of stud farms especially in Europe but also in the whole world. Its aim is to confirm the unique nature of the Kladruby site. This, too, will be the theme of a conference with international participation to be held in May.

Resumé of some of the public debates with residents of municipalities whose cadastres lie on the territory of the nominated landscape on the preparation of the Nomination Dossier:

13 April 2015

Public meeting

Subject: Kladruby nad Labem and UNESCO

Venue: Premises of the Municipal Authority in Kladruby nad Labem

Public meeting attended by representatives of the Ministry of Culture of the Czech Republic, Ministry of Agriculture of the Czech Republic, the National Heritage Institute and the National Stud Farm at Kladruby nad Labem and representatives of the Kladruby nad Labem municipality and local citizens. Attention was paid in the first place to the issue of declaring Kladrubské Polabí (Kladruby Elbeland) a heritage zone, which was subsequently, in 2015, designated as such by a measure of general nature. Attention focused also on the current activities of the National Stud Farm at Kladruby nad Labem, especially in connection with the draft of the Nomination Dossier proposal. The floor was taken by the managing director of the National Stud Farm at Kladruby nad Labem, Jiří Machek, who informed the present members about one of the priorities of the National Stud Farm – namely, preparing the draft of the proposed Nomination Dossier.

The floor was then taken, in order, by other representatives of ministries and organisations, who informed the meeting especially about the processes and mechanisms linked to the preparations for the designation of the heritage zone and inscription of the heritage site in the World Heritage List. To illustrate the point, they presented examples of such mechanisms and processes relating to the already existing heritage sites monuments inscribed in the World Heritage List. They informed the meeting about the positive and negative aspects of the prospective inscription of the landscape in the World Heritage List.

A public debate followed in which citizens were mainly interested in any restrictions that might ensue from the designation of Kladrubské Polabí a heritage zone and the possible inscription of the entire landscape in the World Heritage List. During the debate no public opposition to the inscription of the landscape in the World Heritage List was noted. Public concerns about excessive regulation of everyday activities on the territory in question after possible inscription in the World Heritage List were confuted by the representatives of the ministries and organisations present at the meeting. The public emphasised that they wanted to be informed continuously and fully about the whole nomination process.

The meeting was closed by the mayor of Kladruby nad Labem, Ms Lenka Gotthardová, who, amongst other things, stated support for the intention to have the entire landscape inscribed in the World Heritage List.

17 June 2015

Public meeting

Subject: Kladruby nad Labem and UNESCO

Venue: National Stud Farm Kladruby nad Labem

Public meeting attended by representatives of the Pardubice Region, Ministry of Culture of the Czech Republic, Ministry of Agriculture of the Czech Republic, the National Heritage Institute and the National Stud Farm at Kladruby nad Labem with representatives of the mayors of municipalities whose cadastres lie on the nominated territory and local citizens.

The debate was opened by the managing director of the National Stud Farm at Kladruby nad Labem, Mr. Jiří Machek, who informed the meeting about the levels and scope of current protection of the National Stud Farm and adjacent landscape and about the continuing interest of the stud farm, or more precisely of the Czech Republic, in nominating this landscape for inscription in the World Heritage List.

Individual representatives of the region, ministries and organisations then informed the meeting about issues relating to the nomination proper and about the value of the territory that made it eligible for inscription on the prestigious list.

Individual representatives spoke about their experience with the nomination process and especially about the effects ensuing from the possible inscription in the World Heritage List. They agreed that positive effects dominated unequivocally over any negative effects of inscription on the list.

During the discussion session, members of the public asked many questions relating both to practical aspects of life in the municipalities after the inscription on the list, should it occur, and, for example, constraints on construction activities on their properties. Questions posed by the mayors also concerned subsidy issues, which are closely linked to the development of the region after inscription. Public concerns about excessive regulation of common activities after the inscription in the World Heritage List, should it occur, were confuted by the representatives of the ministries and organisations present at the meeting.

In conclusion, the managing director of the National Stud Farm at Kladruby nad Labem, Mr. Jiří Machek, stressed that this was an extraordinary opportunity for the development of not only the stud farm, but also the individual municipalities historically connected with it, as well as for the whole region. He pointed out the necessity of support of the people living in the municipalities for the intention to nominate the stud farm. Individual representatives of the ministries and organisations agreed to hold further public debates on this theme. This has happened and will continue to take place (see further).

15 June 2017

Public meeting on the National Stud Farm and UNESCO

Venue: Kladruby nad Labem

Public meeting attended by representatives of the Pardubice Region, the town of Litomyšl,²³ the chairman of the Volunteer Association of Municipalities and Towns of the Czech Republic that have heritage sites inscribed on the UNESCO World Heritage List as Czech Heritage on their territories, and representatives of the National Stud Farm at Kladruby nad Labem with the representatives and mayors of municipalities whose cadastres lie in the Nominated Landscape, and with the inhabitants of these municipalities.

The director of the National Stud Farm at Kladruby nad Labem pointed out the achievements accomplished in the restoration of the building components of the stud farm.²⁴ The deputy director informed the meeting about other completed projects and, especially, spoke in detail about the planned projects to restore other buildings and landscape that have not yet been restored (see also the Addendum to chapter 4.a.5 Major Property Restoration Projects under Preparation).

The main objective of this meeting with the citizens was to acquaint them with the current state of the preparation of the Nomination Dossier titled Landscape for Breeding and Training of Ceremonial Carriage Horses at Kladruby nad Labem.

The questions posed by the citizens did not avoid practical issues of life in the municipality now and after the inscription in the World Heritage List should it occur. They pointed out especially the unsatisfactory capacity of parking facilities for private cars and coaches. In this context, the deputy director of the stud farm pointed out the preparation of a project to develop a car park of adequate capacity in the farm courtyard at Kladruby nad Labem. The discussion also touched services in the municipalities and the possibility of their extension, also in the context of the possible inscription of the landscape in the list.

²³ Litomyšl Castle – heritage site inscribed in the World Heritage List since 1999.

²⁴ See Restoration of the Components of the National Heritage Site of the Stud Farm at Kladruby nad Labem project. For more details see Nomination Dossier 4.a.4 Major property restoration projects completed.

The citizens present at the meeting expressed support for the activities carried out by the National Stud Farm at Kladruby nad Labem, not excluding the nomination of the landscape for inscription in the World Heritage List.

Invitation to one of the public debates with the residents of local communities situated in the Nominated Landscape that was held on 31st October 2017:



Národní hřebčín Kladruby nad Labem, s. p. o.
Invitation

The public debate with the residents of the communities involved:

Nomination of the Kladruby landscape for the inscription to the UNESCO List



Tuesday 31/10/2017 from 17:00
Imperial Inn at Kladruby nad Labem

Participants include Zdeněk Novák, Ministry of Culture, Roman Linek, the first deputy of the Pardubický Region, Michal Beneše, the vice-president of the Czech Committee for UNESCO and Michaela Severová, the Executive Manager for the Czech World Heritage Sites. There will be an update on the latest developments of the nomination process for the Property inscription in the UNESCO World Heritage List.

General public and professional community welcome.

Free entry

Contact: Kateřina Vrbová,
t. el.: 731159 497,
e-mail: vrbova@nhkladruby.cz

www.nhkladruby.cz

1 INTEGROVANÝ
OPERACNÍ
PROGRAM



EVROPSKÁ UNIE
EVROPSKÝ FOND PRO REGIONÁLNÍ ROZVOJ
ŠANCE PRO VAŠÍ ROZVOJ



MINISTERSTVO
PRO MÍSTNÍ
ROZVOJ ČR

besedu s občany dotčených obcí:
**Nominace Kladrubske krajiny
na seznam UNESCO**



úterý 31. 10. 2017 od 17:00 hodin
sál Císařského hostince v Kladrubech nad Labem

Za účasti státního tajemníka Ministerstva kultury Ing. Zdeňka Nováka, prvního náměstka hejtmána Pardubického kraje Ing. Romana Línska, MBA, místopředsedy České komise pro UNESCO Mgr. Michala Beneše, CSc. a výkonné ředitelky DSO České dědictví UNESCO Ing. Michaely Severové bude prezentován aktuální stav příprav a činností souvisejících se zápisem památky do Seznamu světového kulturního a přírodního dědictví UNESCO.

Přednáška je určena
pro laickou i odbornou veřejnost.

Vstup zdarma

Kontakt: Kateřina Vrbová,
tel.: 731 159 497,
e-mail: vrbova@nhkladruby.cz

www.nhkladruby.cz

Fig. 28: Invitation to the public debate.

Addendum to Annex 6 Other Documents

New document: Memorandum on the Establishment of the Steering Group for the Landscape for Breeding and Training of Ceremonial Carriage Horses at Kladruby nad Labem

The Memorandum on the Establishment of the the National Heritage Site of Stud Farm Cultural Landscape at Kladruby nad Labem in Annex 6 to the Nomination Dossier expired on 19th June 2018. It was replaced by the Memorandum on the Establishment of the Steering Group for the Landscape for Breeding and Training of Ceremonial Carriage Horses at Kladruby nad Labem which came into effect on 19th June.

This is the text of the new Memorandum:

MEMORANDUM ON THE ESTABLISHMENT

of

the Steering Group for the Landscape for Breeding and Training of Ceremonial Carriage Horses at Kladruby nad Labem Nominated to the World Heritage List pursuant to the Convention concerning Protection of World Cultural and Natural Heritage

PREAMBLE

Members of the Government of the Czech Republic, the Ministers of Agriculture, Culture and Environment have agreed that for the benefit of responsible management of the cultural and historical values of transnational significance represented by the Landscape for Breeding and Training of Ceremonial Carriage Horses at Kladruby nad Labem it is instrumental to establish an advisory body – the Steering Group.

Article 1 REASONING

The cultural and historical heritage of national and world significance at Kladruby nad Labem is represented by a landscape including sets of buildings and other immovable property located on plots of land delineated by spatial identifiers and constituting the site of the stud farm, which also includes the main breeding herd of Kladruber horses consisting of 65 white mares and 4 white stallions; all these components are jointly and responsibly managed either as a national heritage site or a heritage site and represent a substantial part of the Kladrubské Polabí Protected Area.

The Regional Authority of Pardubický Region bears the state administration powers in relation to the Kladruby nad Labem Stud Farm which was designated a national cultural heritage site by Government Decree No. 132/2001. Pardubický Region, as an independent body, approves the Strategy for the Support of National Heritage Management in the region, it approves the proposed long-term, mid-term and detailed plans and programmes of preservation and restoration of cultural heritage in the region and regulates the use of heritage sites in the region for cultural events and educational purposes.

The Landscape for Breeding and Training of Ceremonial Carriage Horses at Kladruby nad Labem (hereinafter as “the Nominated Landscape”) has been inscribed under the working title “The Stud Farm

Cultural Landscape at Kladruby nad Labem” in the Czech Tentative List administered by the UNESCO International Secretariat. This inscription expressed the initial will of the Czech Republic to propose the Nominated Landscape for the inscription in the World Heritage List (hereinafter as “the List”) administered pursuant to the Convention concerning Protection of World Cultural and Natural Heritage (hereinafter as “the Convention”).

Later this will has been transposed into the final step of a legal nature which is the commitment to have the Nominated Landscape inscribed into the List on the basis of the formal submission to the World Heritage Centre of the Nomination Dossier signed by the Ministers of Culture and Agriculture on 26th January 2018.

With respect to the commitments of the Czech Republic stemming from the Convention and relevant decisions adopted by the World Heritage Committee, as well as from the Operating Guidelines, and with respect to the need of due care for the Nominated Landscape and its Outstanding Universal Value, authenticity, integrity and its sustainable traditional use, as well as with respect to the measures set forth in the Nomination Dossier Chapter 3.3. and following, the key mission of the Steering Group, if the Landscape for Breeding and Training of the Ceremonial Carriage Horses is inscribed in the List, will be the implementation of actions stated below. That is those actions assigned to the Steering Group under the Operating Guidelines.

Article 2 ESTABLISHMENT AND STATUTE OF THE STEERING GROUP

2.1. After discussion with the Pardubický Region, the Ministers of Agriculture, Culture and Environment jointly establish, by the means of this Memorandum, the Steering Group for the Landscape for Breeding and Training of Ceremonial Carriage Horses at Kladruby nad Labem (hereinafter as “the Steering Group”).

2.2. The Steering Group is an initiator, co-ordinator and advisory body of the ministries stated above as well as of other bodies and organisations, namely the Kladruby nad Labem National Stud Farm in matters related to the preservation of the Nominated Landscape values and its sustainable traditional use.

2.3. The Steering Group reports to the three ministers stated above.

2.4. In outward dealings the Steering Group is represented by its Chairperson.

2.5. The services of the Secretariat are provided by the Managing Director of the Kladruby nad Labem National Stud Farm, who acts as its permanent secretary with a voting right.

Article 3 MEMBERS OF THE STEERING GROUP

3.1. The Steering Group has at least nine members including the Managing Director of the Kladruby nad Labem National Stud Farm who is a member of the Steering Group *ex officio* during his tenure and at the same time its permanent secretary pursuant to Article 2, Section 2.5.

3.2. Membership of the Steering Group is honorary.

3.3. The members of the Steering Group are appointed by the Minister of Agriculture from nominees proposed by the ministers stated above while taking into consideration the opinion of the Managing Director of the Kladruby nad Labem National Stud Farm.

3.4. The term of office of the Steering Group members is five years and they may be repeatedly appointed for a further period immediately after their term ends. If a member was appointed during the five years term of office his/her mandate lasts only till the end of such term.

3.6. Membership of the Steering Group is waived at the end of the office term, by resignation or death of a member of the Steering Group or when a member is discharged by the Minister of Agriculture upon the proposal of one of the ministers stated above or by a move of the Steering Group.

Article 4 THE STEERING GROUP MEETINGS

4.1. The Steering Group members are equal with each other and each of them has the right of one vote. The Steering Group members cannot be substituted during the Steering Group meetings.

4.2. The Steering Group meetings are chaired by the Chairperson who is selected from the members of the Steering Group and appointed by the Minister of Agriculture.

4.3. The Steering Group holds regular meetings at least three times a year. The meeting is called by the Chairperson. The Chairperson must summon, without any delay, an extraordinary meeting of the Steering Group if asked to do so by any of the ministers stated above or the Managing Director of the Kladruby nad Labem National Stud Farm.

4.4. The Steering Group decides jointly. It has quorum if more than half of its members are present. It adopts resolutions by a simple majority of votes of the members present; if the number of votes is equal then the vote of the Chairperson decides.

4.5. Upon the proposal of any of its members the Steering Group may invite to its meetings an external guest if the nature of the matter to be discussed requires to do so.

4.6. The permanent secretary takes minutes of the Steering Group meetings which are then approved by the Chairperson.

4.7. This Memorandum empowers the Steering Group to adopt the Rules of Procedure, regulate other issues related to its meetings and meetings of the *ad hoc* working groups established pursuant to Article 5, Section 5.5., and to change the Rules if necessary.

Article 5 THE REMIT OF THE STEERING GROUP

5.1. The Steering Group sets the agenda in line with its mission stated in Article 1 pursuing the objective of the Nominated Landscape's permanent status as a property inscribed in the World Heritage List with a particular focus on the preservation of its outstanding universal value, authenticity and integrity and its sustainable traditional use. To this extent the Steering Group formulates recommendations and positions and comments on the strategic issues relevant to management of the Nominated Landscape as well as commitments of the Czech Republic as a State Party to the Convention.

5.2. The Steering Group monitors and analyses the activity and documents of the UNESCO World Heritage Committee and its organisations which apply to the Nominated Landscape; to this extent it submits reports to the relevant ministries and communicates through these ministries with UNESCO.

5.3. The Steering Group discusses the proposed Nominated Landscape Management Plan (dealing with the management of the world heritage site) the development of which is commissioned by the Kladruby nad Labem National Stud Farm and if necessary, recommends its sanctioning by other bodies and organisations involved in the management of the Nominated Landscape. It recommends the prioritisation of actions resulting from the Management Plan.

5.4. The Steering Group regularly monitors the fulfilment of the Management Plan and recommends its adjustments and updates if necessary and submits the outcomes to the relevant ministers or other public administration and heritage management bodies.

5.5. This Memorandum empowers the Steering Group with the right to establish one or more *ad hoc* expert working group(s) which meet(s) if necessary and work(s) under the leadership of the Steering Group secretary in order to address specific tasks of the preservation of the outstanding universal value of the Nominated Landscape, its authenticity and integrity as well as its promotion. The Steering Group checks the outcomes produced by the expert working group(s) and adopts relevant conclusions and recommendations.

5.6. The Steering Group, *vis-à-vis the general public*, advocates the Nominated Landscape management and its purpose and promotes the importance of its nomination as a world heritage site of outstanding universal value.

5.7. The Steering Group regularly assesses the Nominated Landscape management performed by the Kladruby nad Labem National Stud Farm, which acts as the Nominated Landscape Site Manager, discusses the Periodic Monitoring Reports dealing with the Nominated Landscape with a specific focus on the proposed measures for improvement, based on the findings, and recommends their implementation, if necessary, to the relevant ministries, public administration bodies of the Pardubický Region, Kladruby nad Labem National Stud Farm or to other stakeholders involved in the preservation of the Nominated Landscape values.

Article 6 STEERING GROUP SECRETARIAT

6.1. The secretariat services for the Steering Group are provided by the Kladruby National Stud Farm (hereinafter as “the Secretariat”). The Secretariat gathers, prepares and distributes materials for the Steering Group meetings.

6.2. The Secretariat helps with the organisation of the Steering Group and *ad hoc* working group(s) meetings, monitors and assists in the implementation of resolutions adopted by the Steering Group or if necessary refers them to other relevant bodies and institutions.

6.3. The Secretariat provides the members of the Steering Group with information and documents related to decisions on the Nominated Landscape adopted by the UNESCO World Heritage Committee.

6.4. The Secretariat keeps the Steering Group documents and the Nomination Dossier file.

Article 7 TEMPORARY AND FINAL PROVISIONS

7.1. The members of the Steering Group are obliged to co-operate with each other for the benefit of the preservation of the outstanding universal value of the Nominated Landscape, its integrity and authenticity and sustainable traditional use.

7.2. The Kladruby nad Labem National Stud Farm will not take any significant actions associated with the Steering Group activities set above without first consulting the Steering Group on them, unless the law stipulates otherwise. Any disputes between the Steering Group and the management of the Kladruby nad Labem National Stud Farm will be resolved by the Minister of Agriculture in co-operation with the Minister of Culture and Minister of the Environment.

7.3. Until the Steering Group adopts its Rules of Procedure pursuant to Article 4, Section 4.7. it will follow the Rules of Procedure of the Steering Group for the national heritage site of the Stud Farm Cultural Landscape at Kladruby nad Labem adopted on 29th July 2016.

7.4. The Memorandum on the Establishment of the Steering Group for the national heritage site of the Stud Farm Cultural Landscape at Kladruby nad Labem of 9th June 2016 is waived and replaced by this Memorandum on the Establishment of the Steering Group for the Landscape for Breeding and Training of Ceremonial Carriage Horses at Kladruby nad Labem which comes into force on the date of its signature by the Ministers of Agriculture, Culture and Environment.

7.5. On the day of signature the mandate of the members and Chairperson of the Steering Group appointed pursuant to the Memorandum on the Establishment of the Steering Group for the national heritage site of the Stud Farm Cultural Landscape at Kladruby nad Labem of 9th June 2016 is waived.

Prague, 19th June, 2018

(Signature)

Ing. Jiří Milek
Minister of Agriculture

(Signature)

PhDr Ilja Šmíd
Minister of Culture

(Signature)

Mgr. Richard Brabec
Minister of the Environment



MEMORANDUM O ZŘÍZENÍ

**Rady Krajiny pro chov a výcvik ceremoniálních kočárových koní v Kladruzech nad Labem
nominované na Seznam světového dědictví
ve smyslu Úmluvy o ochraně světového kulturního a přírodního dědictví**

PREAMBULE

Členové vlády České republiky, ministři zemědělství, kultury a životního prostředí se dohodli, že pro zodpovědné nakládání s kulturně historickými hodnotami nadnárodního významu Krajiny pro chov a výcvik ceremoniálních kočárových koní v Kladruzech nad Labem bude účelné zřídit iniciačně koordinační a poradní orgán - její Radu.

Čl. 1. ODŮVODNĚNÍ RADY

Kulturně historické dědictví národního i světového významu v Kladruzech nad Labem tvoří krajinný areál, tj. soubor budov a jiných nemovitých objektů na pozemcích vymezených prostorovými identifikačními znaky, včetně těchto pozemků tvořících areál hřebčína, jakož i kmenové chovné stádo starokladrubskeho koně v počtu 65 klisen a 4 hřebců v barvě bílé, který je nedílně a zodpovědně spravován jako národní kulturní památka, případně kulturní památka, a jako podstatná součást památkové zóny Kladrubske Polabí.

Výkon státní správy na úseku památkové péče v přenesené působnosti zajišťuje k národní kulturní památce Hřebčín Kladruhy nad Labem, prohlášené nařízením vlády č. 132/2001, Krajský úřad Pardubického kraje. Pardubický kraj v samostatné působnosti schvaluje koncepci podpory státní památkové péče v kraji, schvaluje návrhy dlouhodobých, střednědobých a prováděcích plánů a programů zachování a obnovy kulturních památek v kraji, usměrňuje kulturně výchovné využití kulturních památek v kraji.

Krajina pro chov a výcvik ceremoniálních kočárových koní v Kladruzech nad Labem (dále jen „nominovaná krajina“) byla pod pracovním názvem Kulturní krajina hřebčína v Kladruzech nad Labem zařazena na Indikativní seznam České republiky vedený Mezinárodním sekretariátem UNESCO. Toto

zařazení bylo předběžným projevem vůle České republiky navrhnout nominovanou krajinu k zápisu do Seznamu světového dědictví (dále jen „Seznam“) vedeného podle Úmluvy o ochraně světového kulturního a přírodního dědictví (dále jen „Úmluva“).

Tato vůle byla následně právně realizována finálním krokem, jímž je závazné ucházení se o zařazení nominované krajiny na Seznam tím, že byla Centru světového dědictví oficiálně předložena její nominační dokumentace signovaná ministry kultury a zemědělství 26. ledna 2018.

S ohledem na dodržení závazků vyplývajících pro Českou republiku z Úmluvy, z relevantních rozhodnutí mezivládního Výboru pro světové dědictví, včetně jím přijaté mezinárodní Směrnice o provádění úmluvy a z důvodu nutnosti zajistit náležitou péči o nominovanou krajinu, resp. o její světově výjimečnou hodnotu, autenticitu, integritu a trvale udržitelné tradiční užívání, jakož i s ohledem na opatření uvedená v nominační dokumentaci, mj. v kapitole 3.3. a násl., bude posláním Rady Krajiny pro chov a výcvik ceremoniálních kočárových koní v případě zápisu nominované krajiny do Seznamu plnit úkoly, které jsou uvedeny níže, tj. úkoly tzv. Steering Group ve smyslu Směrnice k provádění Úmluvy.

Čl. 2. ZŘÍZENÍ RADY A JEJÍ POSTAVENÍ

2.1. Ministři zemědělství, kultury a životního prostředí po projednání s Pardubickým krajem společně zřijíjí tímto Memorandem Radu Krajiny pro chov a výcvik ceremoniálních kočárových koní v Kladrubech nad Labem (dále jen „Rada“).

2.2. Rada je iniciačně koordinačním a poradním orgánem shora uvedených ministerstev a dalších orgánů a organizací, zejména Národního hřebčína Kladrubby nad Labem, ve věcech péče o hodnoty nominované krajiny a její trvale udržitelné tradiční užívání.

2.3. Rada je odpovědná shora uvedeným ministrům.

2.4. Radu navenek zastupuje její předseda.

2.5. Služby sekretariátu Rady zajišťuje Národní hřebčín Kladrubby nad Labem, jehož ředitel je jejím stálým tajemníkem s právem hlasu.

Čl. 3. ČLENSTVÍ V RADĚ

3.1. Rada má nejméně devět členů včetně předsedy Rady a ředitele Národního hřebčína Kladrubby nad Labem, který je *ex officio* po dobu výkonu své funkce členem Rady a zároveň jejím stálým tajemníkem dle čl. 2., odst. 2.5.

3.2. Členství v Radě je čestné.

3.3. Členy Rady jmenuje ministr zemědělství na základě individuálně podávaných návrhů shora uvedených ministrů a s přihlédnutím ke stanovisku ředitele Národního hřebčína Kladrubby nad Labem.

3.4. Funkční období Rady je pětileté. Členové Rady mohou být opětovně jmenováni bezprostředně po skončení svého mandátu. Pokud byl člen Rady jmenován v průběhu probíhajícího pětiletého funkčního období, jeho mandát trvá pouze do konce tohoto období.

3.6. Členství v Radě zaniká uplynutím funkčního období Rady, vzdáním se členství či úmrtím člena Rady, nebo odvoláním z funkce člena Rady ministrem zemědělství na základě návrhu některého ze shora uvedených ministrů či z podnětu Rady.

Čl. 4. JEDNÁNÍ RADY

4.1. Členové Rady mají při výkonu své funkce rovné postavení, přičemž každý člen má právo jednoho hlasu. Členové nejsou při jednání Rady zastupitelní.

4.2. Jednání Rady řídí předseda, kterého jmenuje ministr zemědělství z řad členů Rady. Předseda může v případě své nepřítomnosti pověřit řízením jednání Rady jiného jejího člena. Funkce stálého tajemníka Rady je neslučitelná s výkonem funkce předsedy Rady.

4.3. Rada se schází na řádných zasedáních nejméně třikrát ročně. Zasedání Rady svolává její předseda. Předseda je povinen bez zbytečného odkladu svolat mimořádné zasedání Rady, požádá-li o to kterýkoliv ze shora uvedených ministrů nebo ředitel Národního hřebčína Kladruby nad Labem.

4.4. Rada rozhoduje ve sboru. Je usnášeníschopná při účasti nadpoloviční většiny svých členů. Svá usnesení přijímá prostou většinou hlasů přítomných členů; při rovnosti hlasů rozhoduje hlas předsedajícího.

4.5. Rada může přizvat na svá jednání na návrh kteréhokoliv z členů hosta, vyžaduje-li to povaha projednávané otázky.

4.6. Z jednání Rady pořizuje její stálý tajemník zápis, který schvaluje předseda Rady.

4.7. Rada se tímto Memorandem zmocňuje k přijetí Jednacího řádu, k úpravě dalších otázek souvisejících s jejím jednáním a s jednáními *ad hoc* odborných pracovních skupin zřízených dle čl. 5., odst. 5.5., případně k jeho změnám.

Čl. 5. PŮSOBNOST RADY

5.1. Rada stanoví pro realizaci svého poslání formulovaného v čl. 1 svou agendu s cílem trvale zajistit nominované krajině statut památky zapsané na Seznam, a to zejména uchováním její světově výjimečné hodnoty, autenticity a integrity a jejího trvale udržitelného tradičního užívání. Rada v tomto směru formuluje doporučení a zpracovává stanoviska a podněty ke koncepčním otázkám, které se týkají péče o nominovanou krajinu, a k závazkům vyplývajícím pro Českou republiku z titulu smluvní strany Úmluvy.

5.2. Rada sleduje a analyzuje činnost a dokumenty Výboru pro světové dědictví při UNESCO a jeho orgánů, které se týkají nominované krajiny; v tomto směru podává shora uvedeným ministerstvům a jejich prostřednictvím i UNESCO zprávy a návrhy.

5.3. Rada projednává návrh Management Planu (plánu nakládání s památkou světového dědictví) nominované krajiny, jehož zpracování zajišťuje Národní hřebčín Kladruby nad Labem, případně jej doporučuje k přijetí orgánům a organizacím odpovídajícím za péči o nominovanou krajinu. Doporučuje prioritizaci úkolů plynoucích z Management Planu.

5.4. Rada periodicky hodnotí plnění Management Planu, doporučuje jeho případnou rektifikaci a aktualizaci a své závěry předkládá i zainteresovaným ministrům, případně dalším orgánům veřejné správy a státní památkové péče.

5.5. Rada je tímto Memorandem zmocněna ustavit jednu nebo více *ad hoc* odborných pracovních skupin, která (-é) se schází (-ejí) podle potřeby a pracují pod vedením tajemníka Rady k řešení konkrétních úkolů souvisejících s péčí o světově výjimečnou hodnotu nominované krajiny, o zachování její integrity a autenticity a s její popularizací. Rada kontroluje výstupy z této odborné pracovní skupiny (skupin) a přijímá k nim odpovídající závěry a doporučení.

5.6. Rada obhajuje smysl péče o nominovanou krajinu a její nominaci před veřejností, její členové plní zejména aktivní roli při veřejné prezentaci nominované krajiny jako památky se světově výjimečnou hodnotou a při osvětě ve vztahu k ní.

5.7. Rada pravidelně hodnotí péči Národního hřebčína Kladruby nad Labem o nominovanou krajinu jakožto jejího *site managera*, projednává Periodické zprávy o stavu nominované krajiny, zejména návrh opatření, která jsou v nich uvedena k nápravě případně zjištěných nedostatků, případně je doporučuje k přijetí shora uvedeným ministerstvům, orgánům veřejné správy Pardubického kraje, Národnímu hřebčínu Kladruby nad Labem, případně dalším institucím zainteresovaným na zachování hodnot nominované krajiny.

Čl. 6. SEKRETARIÁT RADY

6.1. Služby sekretariátu Rady zajišťuje Národní hřebčín Kladruby nad Labem (dále jen „sekretariát“). Sekretariát shromažďuje, připravuje a distribuuje podklady pro zasedání Rady.

6.2. Sekretariát organizačně zajišťuje zasedání Rady a *ad hoc* odborných pracovních skupin, sleduje a zajišťuje plnění přijatých závěrů Rady, případně jejich předání jiným kompetentním orgánům a institucím.

6.3. Sekretariát poskytuje členům Rady informace a materiály, které se týkají rozhodnutí mezivládního Výboru pro světové dědictví UNESCO ve věcech nominované krajiny.

6.4. Sekretariát vede archiv písemností Rady a archiv nominační dokumentace.

Čl. 7. PŘECHODNÁ A ZÁVĚREČNÁ USTANOVENÍ

7.1. Členové Rady jsou povinni si vzájemně poskytovat bezodkladnou součinnost při plnění úkolů souvisejících s uchováním světově výjimečné hodnoty nominované krajiny, její integrity a autenticity a s jejím trvale udržitelným tradičním užíváním.

7.2. Národní hřebčín Kladruby nad Labem nebude činit žádné podstatné kroky související s činností Rady, jak je stanovena výše, bez předchozích konzultací s ní, ledaže by zákon stanovil jinak. Případné rozpory mezi Radou a vedením Národního hřebčína Kladruby nad Labem řeší ministr zemědělství ve spolupráci s ministrem kultury a ministrem životního prostředí.

7.3. Do přijetí svého Jednacího řádu dle čl. 4., odst. 4.7. se Rada řídí Jednacím řádem Rady památky Kulturní krajina hřebčína v Kladrubech nad Labem z 29. července 2016.

7.4. Memorandum o zřízení Rady památky Kulturní krajina hřebčína v Kladrubech nad Labem z 9. června 2016 se zrušuje a nahrazuje tímto Memorandem o zřízení Rady Krajiny pro chov a výcvik ceremoniálních kočárových koní v Kladrubech nad Labem, které nabývá účinnosti dnem jeho podpisu ministry zemědělství, kultury a životního prostředí.

7.5. Ke dni podpisu také zaniká mandát členů a předsedy Rady jmenovaných podle Memoranda o zřízení Rady památky Kulturní krajina hřebčína v Kladrubech nad Labem z 9. června 2016.

V Praze dne

19. 06. 2018



Ing. Jiří Milek
ministr zemědělství



PhDr. Ilja Šmíd
ministr kultury



Mgr. Richard Brabec
ministr životního prostředí